
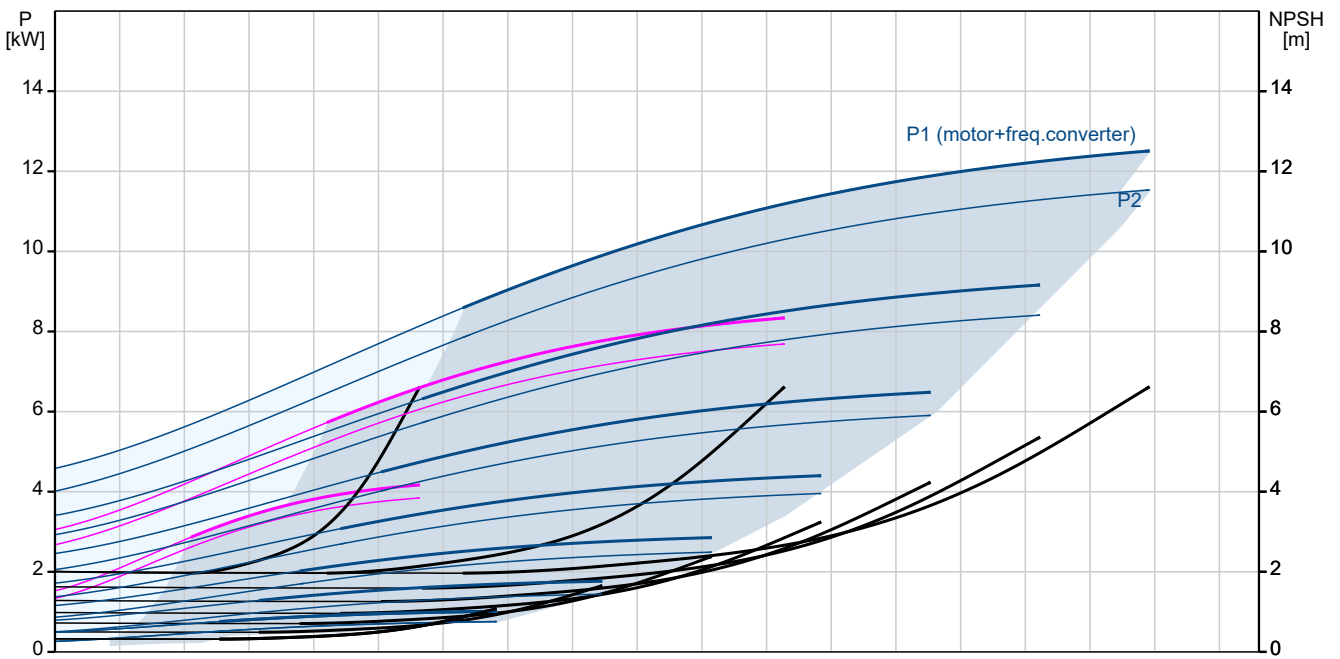
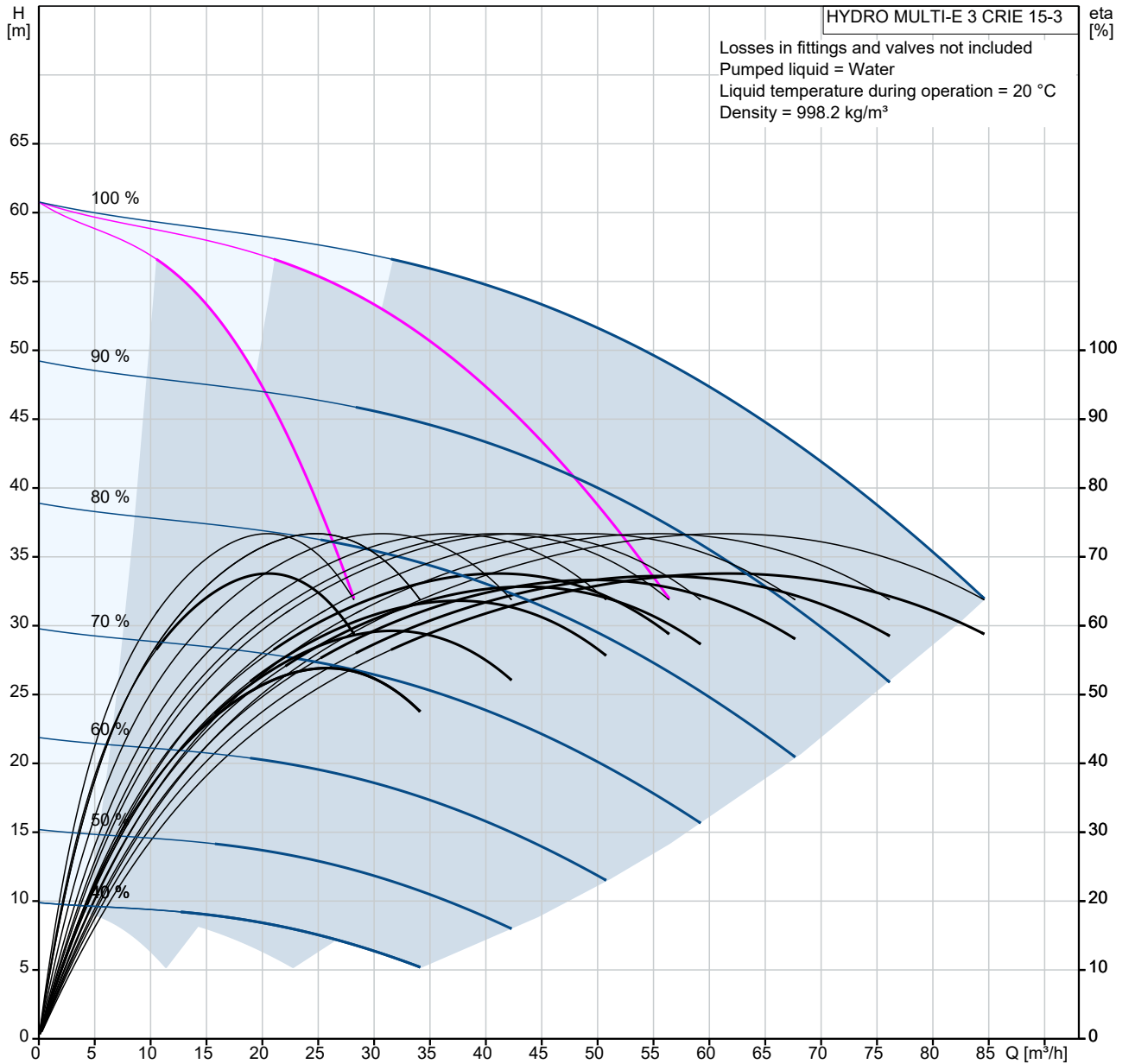


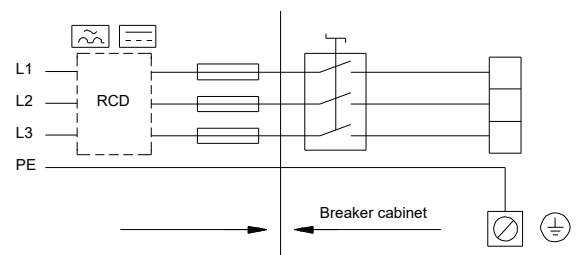
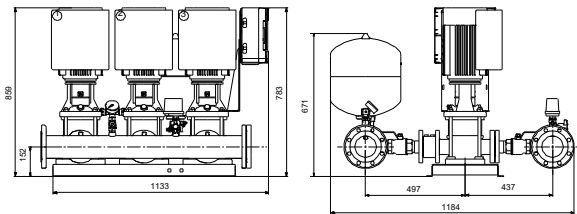
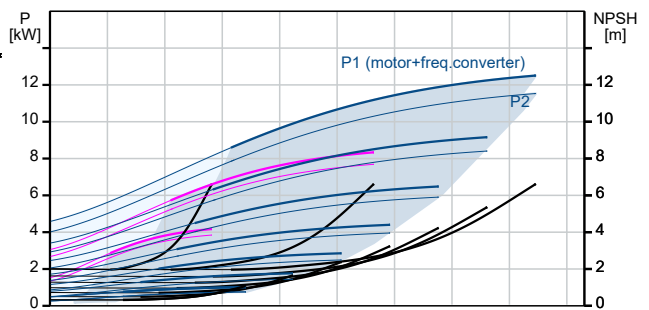
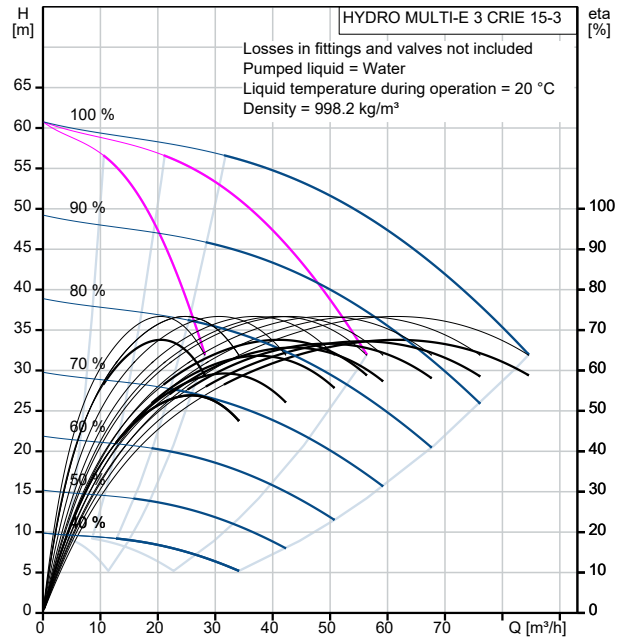
Qty.	Description
1	<p data-bbox="199 159 539 188">HYDRO MULTI-E 3 CRIE 15-3</p>  <p data-bbox="592 508 1066 530" style="text-align: center;">Note! Product picture may differ from actual product</p> <p data-bbox="199 539 464 562">Product No.: 99133207</p> <p data-bbox="199 600 1374 651">GRUNDFOS Hydro Multi-E booster sets are designed for the transfer and pressure boosting of clean water in waterworks, blocks of flats, hotels, industry, hospitals, schools, etc.</p> <p data-bbox="199 658 1453 710">GRUNDFOS Hydro Multi-E booster set consists of 2 to 4 CRIE pumps coupled in parallel and mounted on a common base frame provided with all the necessary fittings.</p> <p data-bbox="199 745 1235 770">Hydro Multi-E is mounted on a common base frame made of stainless steel (DIN W.-Nr. 1.4301).</p> <p data-bbox="199 777 847 801">On the suction side are fitted a suction manifold (DIN W.-Nr.</p> <p data-bbox="199 808 432 833">1.4401 or DIN W.-Nr.</p> <p data-bbox="199 840 1062 864">1.4571) , a pressure switch mounted on a drainable valve and an isolating valve.</p> <p data-bbox="199 871 1437 922">On the discharge side of the pumps are fitted a non-return valve, an isolating valve, a pressure gauge, two pressure transmitters mounted on a drainable valve a diaphragm tank and a stainless steel discharge manifold (DIN W.-Nr.</p> <p data-bbox="199 952 432 976">1.4401 or DIN W.-Nr.</p> <p data-bbox="199 983 293 1008">1.4571).</p> <p data-bbox="199 1014 951 1039">The Hydro Multi-E is fitted with an on/off-switch for the supply voltage.</p> <p data-bbox="199 1068 1374 1093">The Hydro Multi-E is designed for maintaining a constant pressure regardless of flow changes and fluctuation.</p> <p data-bbox="199 1128 1382 1180">The internal PI-controller regulates the number of running pumps and the speed of the pumps according to the required flow.</p> <p data-bbox="199 1216 1433 1240">The system can be operated directly on the panel of any of the pumps or via Grundfos GO (available as accessory)</p> <p data-bbox="199 1301 515 1326">Besides the system features:</p> <ul style="list-style-type: none"> <li data-bbox="199 1332 379 1357">2 Digital outputs <li data-bbox="199 1364 715 1388">2 Digital inputs (one used for dry run protection) <li data-bbox="199 1395 847 1420">2 Analogue inputs (one used for discharge pressure sensor) <li data-bbox="199 1426 472 1451">Multi-Master functionality <li data-bbox="199 1458 379 1482">2 Limit functions <li data-bbox="199 1489 496 1514">Set-point influence function <li data-bbox="199 1520 405 1545">Pipe filling function <li data-bbox="199 1552 467 1576">High efficient PM motors <p data-bbox="199 1606 584 1630">Available communication protocols:</p> <ul style="list-style-type: none"> <li data-bbox="199 1637 261 1662">•LON <li data-bbox="199 1668 301 1693">•Profibus <li data-bbox="199 1700 300 1724">•Modbus <li data-bbox="199 1731 400 1756">•SMS/GSM/GPRS <li data-bbox="199 1762 269 1787">•GRM <li data-bbox="199 1794 300 1818">•BACnet <li data-bbox="199 1825 325 1850">•BACnet IP <li data-bbox="199 1856 352 1881">•Modbus TCP <li data-bbox="199 1888 333 1912">•PROFINET <p data-bbox="199 1942 1281 1966">When delivered, the GRUNDFOS Hydro Multi-E booster set is factory tested and ready for operation.</p> <p data-bbox="199 2024 277 2049">Liquid:</p> <p data-bbox="199 2056 632 2080">Pumped liquid: Water</p>

Qty.	Description
1	<p>Liquid temperature range: 5 .. 60 °C Selected liquid temperature: 20 °C Density: 998.2 kg/m³</p> <p>Technical: Max flow: 91 m³/h</p> <p>Materials: Pump housing: Stainless steel</p> <p>Installation: Maximum operating pressure: 10 bar Maximum permissible inlet pressure: PN 10 bar Flange standard: DIN2642 Manifold inlet: DN 100 Manifold outlet: DN 100</p> <p>Electrical data: IE Efficiency class: IE5 Power (P2) main pump: 4 kW Mains frequency: 50 / 60 Hz Rated voltage: 3 x 380-415 V Rated current: 22 A Start. method: electronically Enclosure class (IEC 34-5): IP54</p> <p>Tank: Volume of pressure tank: 18 l Diaphragm tank: Yes</p> <p>Others: Net weight: 279 kg Gross weight: 365 kg Shipping volume: 1.3 m³ Language: GB Country of origin: GB Custom tariff no.: 84137075</p>

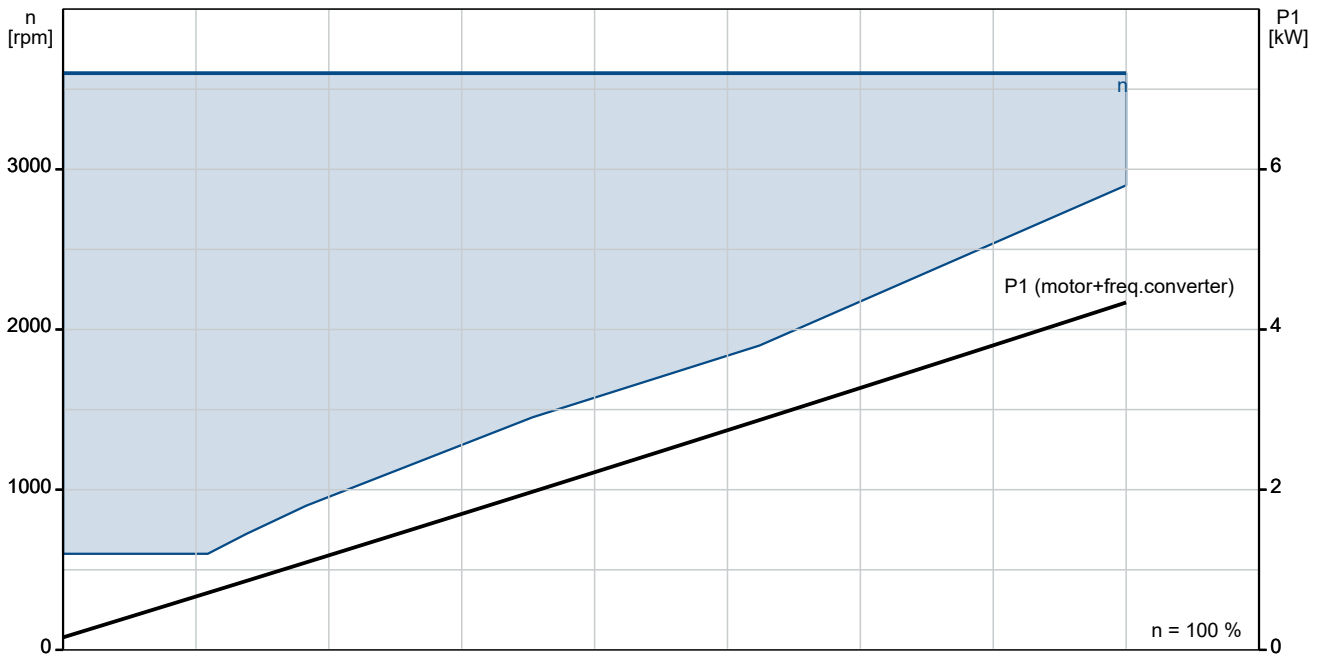
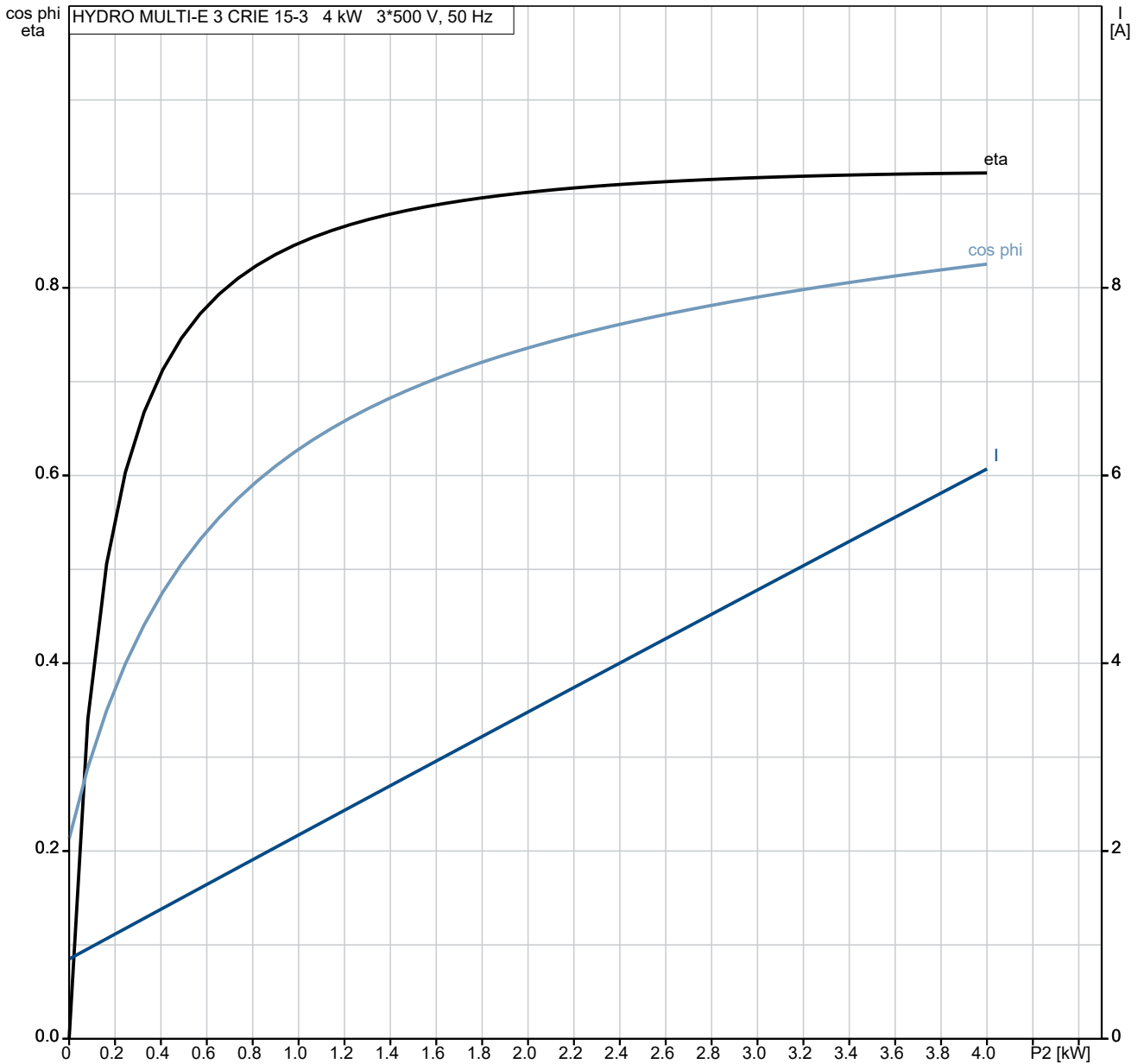
99133207 HYDRO MULTI-E 3 CRIE 15-3



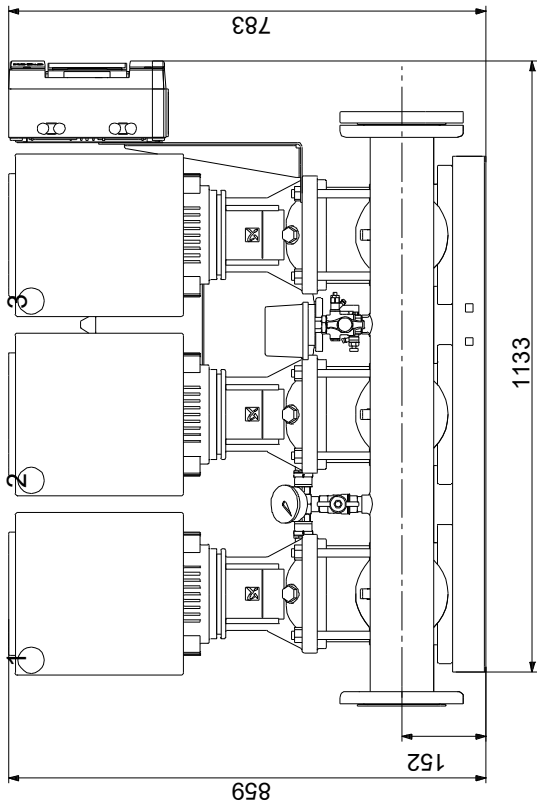
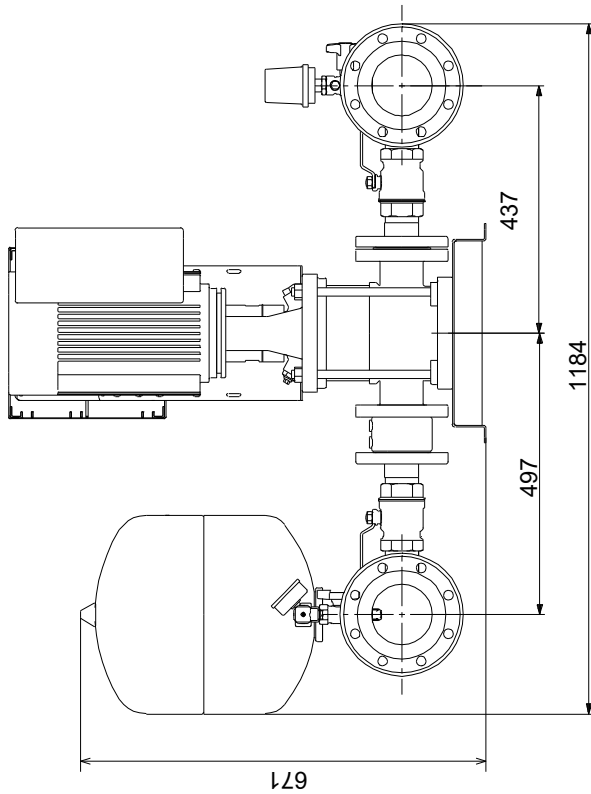
Description	Value
General information:	
Product name:	HYDRO MULTI-E 3 CRIE 15-3
Product No:	99133207
EAN number:	5712607361440
Technical:	
Max flow:	91 m ³ /h
Min flow system:	6 m ³ /h
Head max:	62 m
Pump name:	CRIE 15-3
Number of pumps:	3
Materials:	
Pump housing:	Stainless steel
Manifolds:	Stainless steel
Installation:	
Maximum operating pressure:	10 bar
Maximum permissible inlet pressure:	PN 10 bar
Liquid:	
Pumped liquid:	Water
Liquid temperature range:	5 .. 60 °C
Selected liquid temperature:	20 °C
Density:	998.2 kg/m ³
Electrical data:	
IE Efficiency class:	IE5
Power (P2) main pump:	4 kW
Mains frequency:	50 / 60 Hz
Rated voltage:	3 x 380-415 V
Rated current:	22 A
Start. method:	electronically
Enclosure class (IEC 34-5):	IP54
Tank:	
Volume of pressure tank:	18 l
Diaphragm tank:	Yes
Others:	
Net weight:	279 kg
Gross weight:	365 kg
Shipping volume:	1.3 m ³
Language:	GB
Country of origin:	GB
Custom tariff no.:	84137075



99133207 HYDRO MULTI-E 3 CRIE 15-3

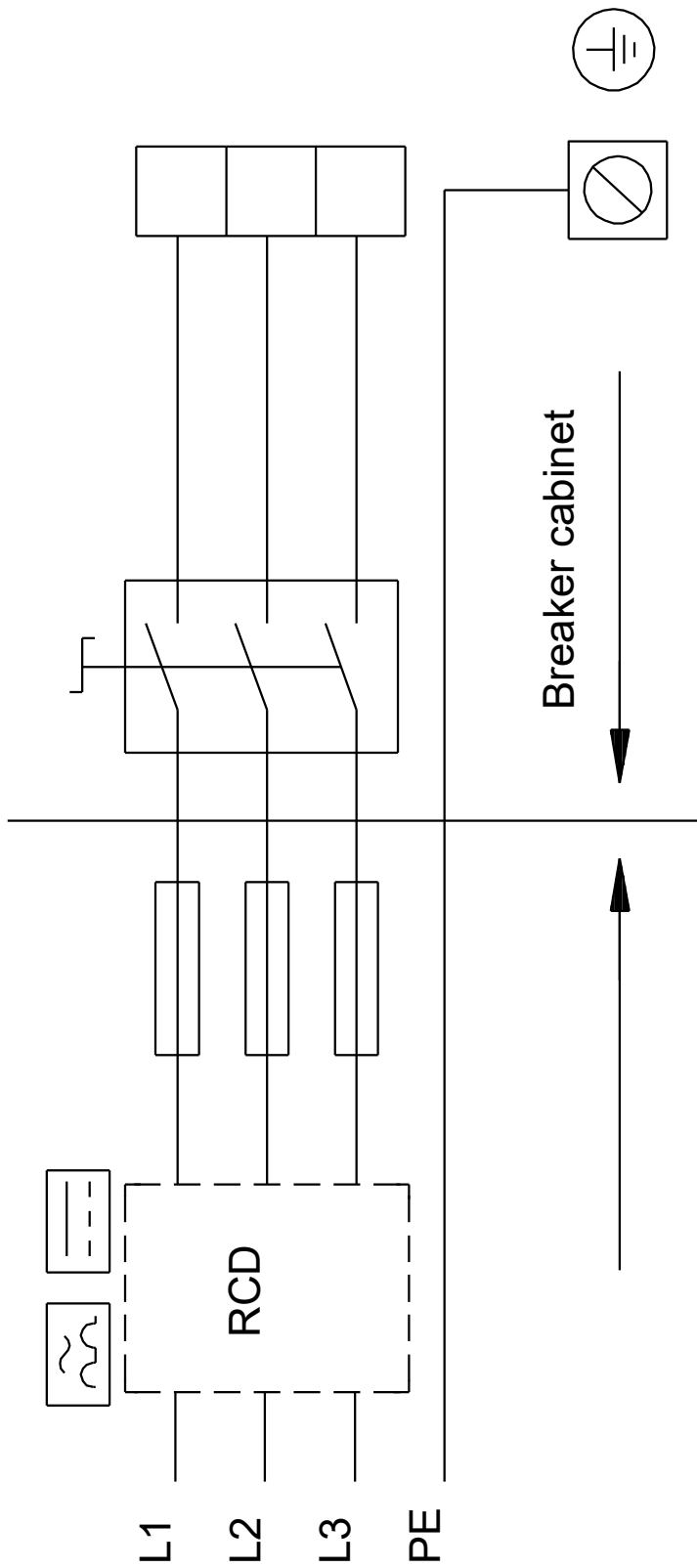


99133207 HYDRO MULTI-E 3 CRIE 15-3



Note! All units are in [mm] unless others are stated.
Disclaimer: This simplified dimensional drawing does not show all details.

99133207 HYDRO MULTI-E 3 CRIE 15-3



Note! All units are in [mm] unless others are stated.

Order Data:

Position	Your pos.	Product name	Amount	Product No	Total
		HYDRO MULTI-E 3 CRIE 15-3	1	99133207	Price on request