
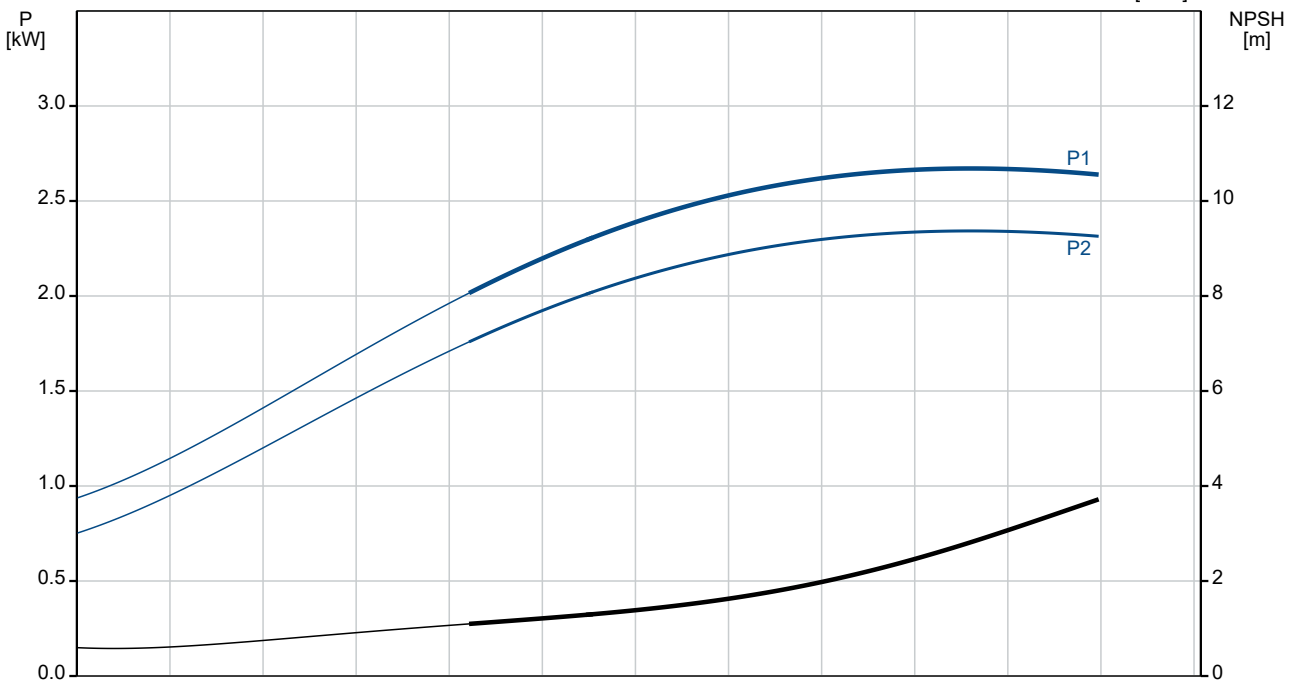
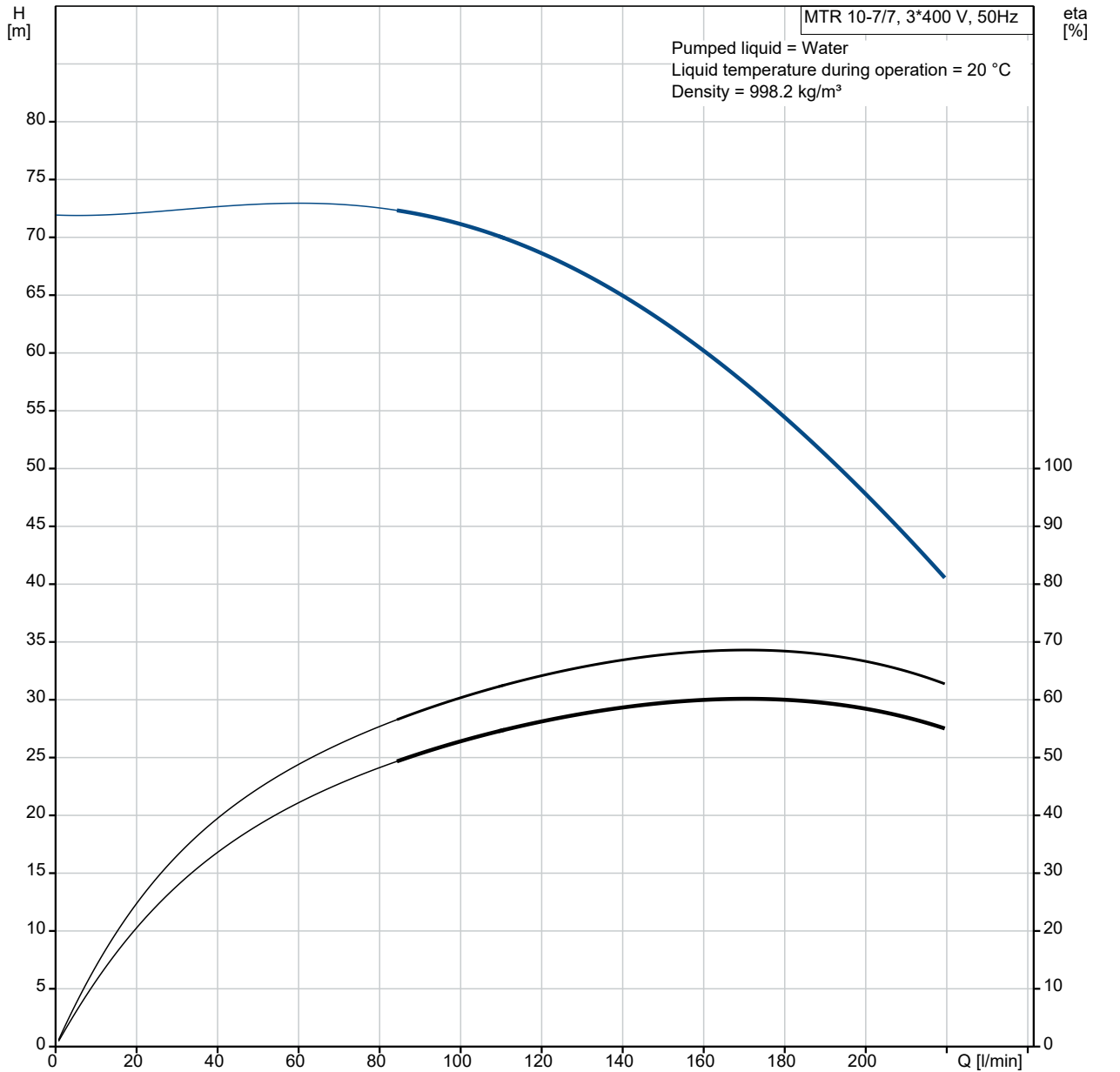


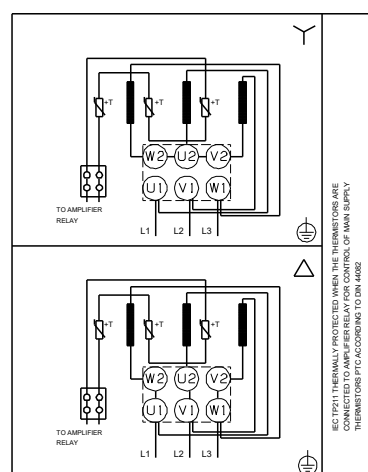
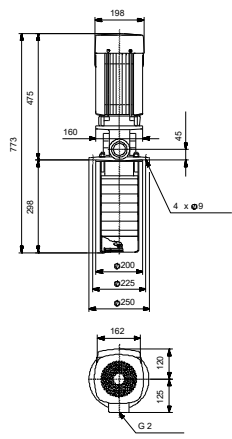
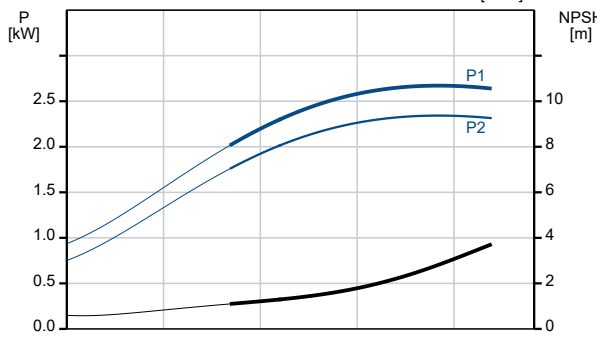
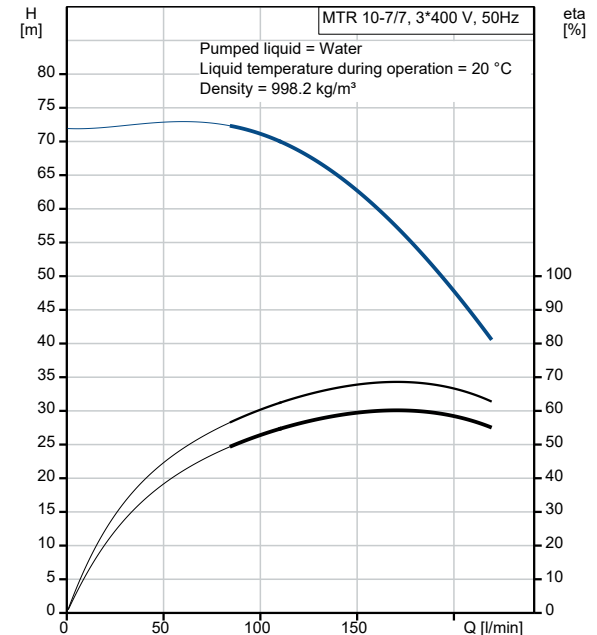
Qty.	Description
1	<p data-bbox="204 163 488 185">MTR 10-7/7 A-W-A-HUUV</p>  <p data-bbox="204 483 478 506">Product No.: On request</p> <p data-bbox="204 544 1430 618">Multistage, immersible, self-priming, centrifugal pump for vertical installation in tanks etc. The pump head and base are in cast iron – all other wetted parts are in stainless steel. The pump has the following characteristics:</p> <ul data-bbox="240 633 1114 745" style="list-style-type: none"> • Dimensions according to DIN 5440. • Impellers, intermediate chambers and spline shaft are made of Stainless steel. • Mechanical shaft seal according to EN 12756. • Power transmission via sintered metal split coupling. <p data-bbox="204 752 1430 797">A cartridge shaft seal ensures high reliability, safe handling, and easy access and service. The pump is fitted with a 3-phase, fan-cooled asynchronous motor.</p> <p data-bbox="204 842 300 864">Controls:</p> <p data-bbox="204 871 635 893">Frequency converter: NONE</p> <p data-bbox="204 931 276 954">Liquid:</p> <p data-bbox="204 960 632 983">Pumped liquid: Water</p> <p data-bbox="204 990 691 1012">Liquid temperature range: -10 .. 90 °C</p> <p data-bbox="204 1019 632 1041">Selected liquid temperature: 20 °C</p> <p data-bbox="204 1048 695 1070">Density: 998.2 kg/m³</p> <p data-bbox="204 1108 316 1131">Technical:</p> <p data-bbox="204 1137 818 1160">Pump speed on which pump data are based: 2902 rpm</p> <p data-bbox="204 1167 667 1189">Rated flow: 167 l/min</p> <p data-bbox="204 1196 643 1218">Rated head: 57.2 m</p> <p data-bbox="204 1225 579 1247">Chambers: 7</p> <p data-bbox="204 1254 579 1276">Drainage back to tank: N</p> <p data-bbox="204 1283 647 1305">Pump orientation: Vertical</p> <p data-bbox="204 1312 635 1335">Code for shaft seal: HUUV</p> <p data-bbox="204 1344 659 1366">Approvals: CE,EAC</p> <p data-bbox="204 1373 759 1395">Curve tolerance: ISO9906:2012 3B</p> <p data-bbox="204 1433 308 1456">Materials:</p> <p data-bbox="204 1462 802 1552">Pump head: Cast iron EN 1561 EN-GJL-200 ASTM A48-25B</p> <p data-bbox="204 1559 722 1648">Impeller: Stainless steel EN 1.4301 AISI 304</p> <p data-bbox="204 1686 323 1709">Installation:</p> <p data-bbox="204 1715 627 1738">t max amb: 60 °C</p> <p data-bbox="204 1744 635 1767">Maximum operating pressure: 25 bar</p> <p data-bbox="204 1774 715 1796">Max pressure at stated temp: 25 bar / 90 °C</p> <p data-bbox="204 1803 746 1825">Type of connection: G internal thread</p> <p data-bbox="204 1832 635 1854">Size of outlet connection: 2 inch</p> <p data-bbox="204 1861 659 1883">Immersion depth: 298 mm</p> <p data-bbox="204 1890 635 1912">Flange size for motor: FT130</p> <p data-bbox="204 1951 363 1973">Electrical data:</p> <p data-bbox="204 1980 611 2002">Motor standard: IEC</p> <p data-bbox="204 2009 635 2031">Motor type: 100LC</p> <p data-bbox="204 2038 603 2060">IE Efficiency class: IE3</p> <p data-bbox="204 2067 627 2089">Rated power - P2: 3 kW</p>

Qty.	Description
1	<p>Mains frequency: 50 Hz Suitable for 50/60 Hz: N Rated voltage: 3 x 380-415D V Rated current: 6.3 A Starting current: 840-920 % Cos phi - power factor: 0.87-0.82 Rated speed: 2900-2920 rpm Efficiency: IE3 87,1% Motor efficiency at full load: 87.1 % Motor efficiency at 3/4 load: 88.0 % Motor efficiency at 1/2 load: 87.7 % Number of poles: 2 Enclosure class (IEC 34-5): 55 Dust/Jetting Insulation class (IEC 85): F Motor No: 85U15510</p> <p>Others: Terminal box position: 6 Minimum efficiency index, MEI ≥: 0.70 Net weight: 40.3 kg Gross weight: 43.8 kg Shipping volume: 0.09 m³ Country of origin: HU Custom tariff no.: 84137075</p>

On request MTR 10-7/7 A-W-A-HUUV 50 Hz

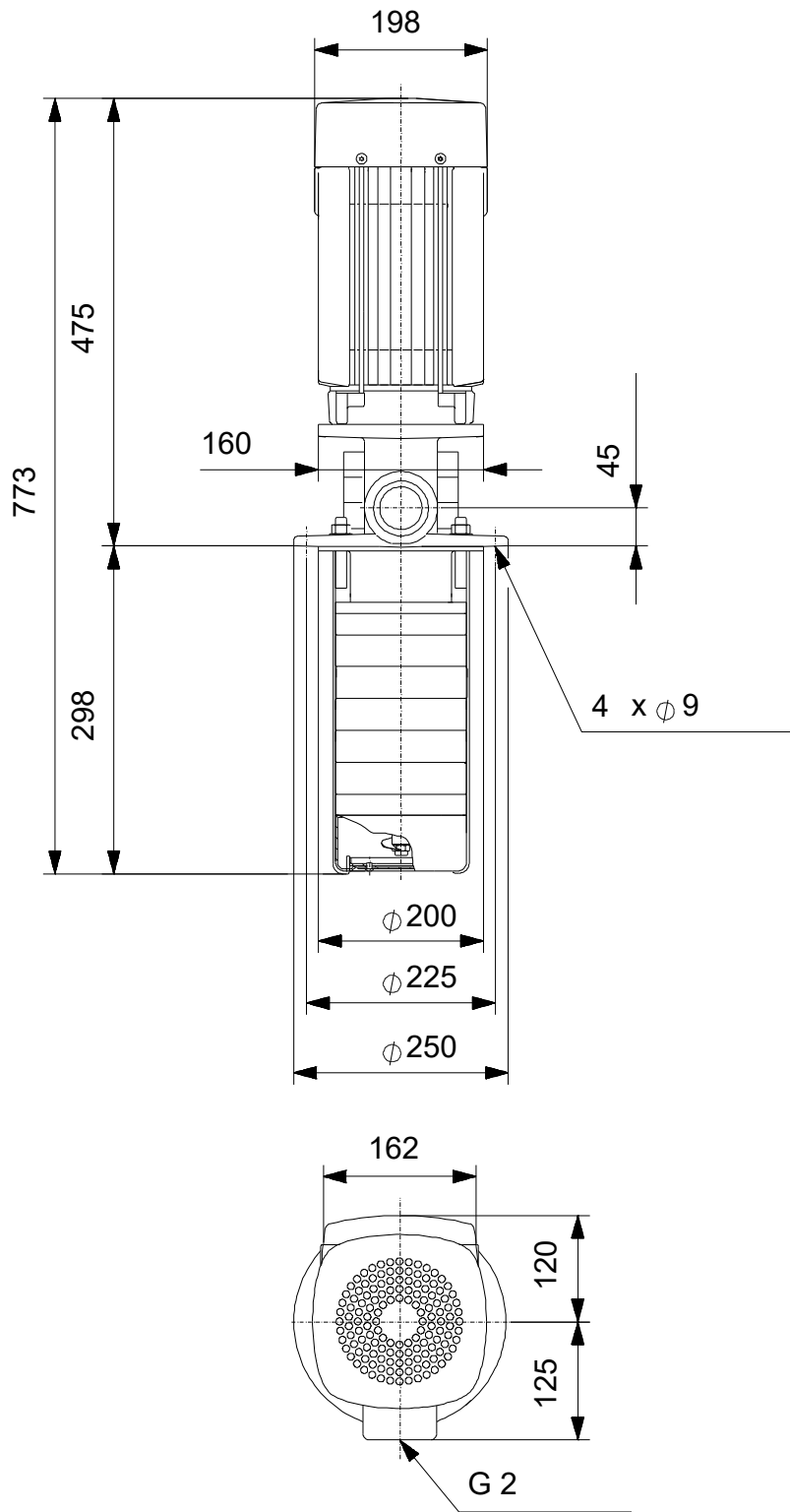


Description	Value
General information:	
Product name:	MTR 10-7/7 A-W-A-HUUV
Product No:	On request
EAN number:	On request
Technical:	
Pump speed on which pump data are based:	2902 rpm
Rated flow:	167 l/min
Rated head:	57.2 m
Chambers:	7
Impellers:	7
Number of reduced-diameter impellers:	0
Drainage back to tank:	N
Pump orientation:	Vertical
Code for shaft seal:	HUUV
Approvals:	CE,EAC
Curve tolerance:	ISO9906:2012 3B
Pump version:	A
Model:	A
Materials:	
Pump head:	Cast iron
Pump head:	EN 1561 EN-GJL-200
Pump head:	ASTM A48-25B
Impeller:	Stainless steel
Impeller:	EN 1.4301
Impeller:	AISI 304
Material code:	A
Installation:	
t max amb:	60 °C
Maximum operating pressure:	25 bar
Max pressure at stated temp:	25 bar / 90 °C
Type of connection:	G internal thread
Size of outlet connection:	2 inch
Immersion depth:	298 mm
Flange size for motor:	FT130
Connect code:	W </td
Liquid:	
Pumped liquid:	Water
Liquid temperature range:	-10 .. 90 °C
Selected liquid temperature:	20 °C
Density:	998.2 kg/m ³
Electrical data:	
Motor standard:	IEC
Motor type:	100LC
IE Efficiency class:	IE3
Rated power - P2:	3 kW
Mains frequency:	50 Hz
Suitable for 50/60 Hz:	N
Rated voltage:	3 x 380-415D V
Rated current:	6.3 A
Starting current:	840-920 %
Cos phi - power factor:	0.87-0.82
Rated speed:	2900-2920 rpm
Efficiency:	IE3 87,1%
Motor efficiency at full load:	87.1 %
Motor efficiency at 3/4 load:	88.0 %
Motor efficiency at 1/2 load:	87.7 %
Number of poles:	2
Enclosure class (IEC 34-5):	55 Dust/Jetting
Insulation class (IEC 85):	F
Built-in motor protection:	PTC
Motor No:	85U15510
Controls:	



Description	Value
Frequency converter:	NONE
Others:	
Terminal box position:	6
Minimum efficiency index, MEI ≥:	0.70
Net weight:	40.3 kg
Gross weight:	43.8 kg
Shipping volume:	0.09 m ³
Country of origin:	HU
Custom tariff no.:	84137075

On request MTR 10-7/7 A-W-A-HUUV 50 Hz



Note! All units are in [mm] unless others are stated.
Disclaimer: This simplified dimensional drawing does not show all details.

On request MTR 10-7/7 A-W-A-HUUV 50 Hz



IEC TP211 THERMALLY PROTECTED WHEN THE THERMISTORS ARE
CONNECTED TO AMPLIFIER RELAY FOR CONTROL OF MAIN SUPPLY
THERMISTORS PTC ACCORDING TO DIN 44082

Note! All units are in [mm] unless others are stated.

