
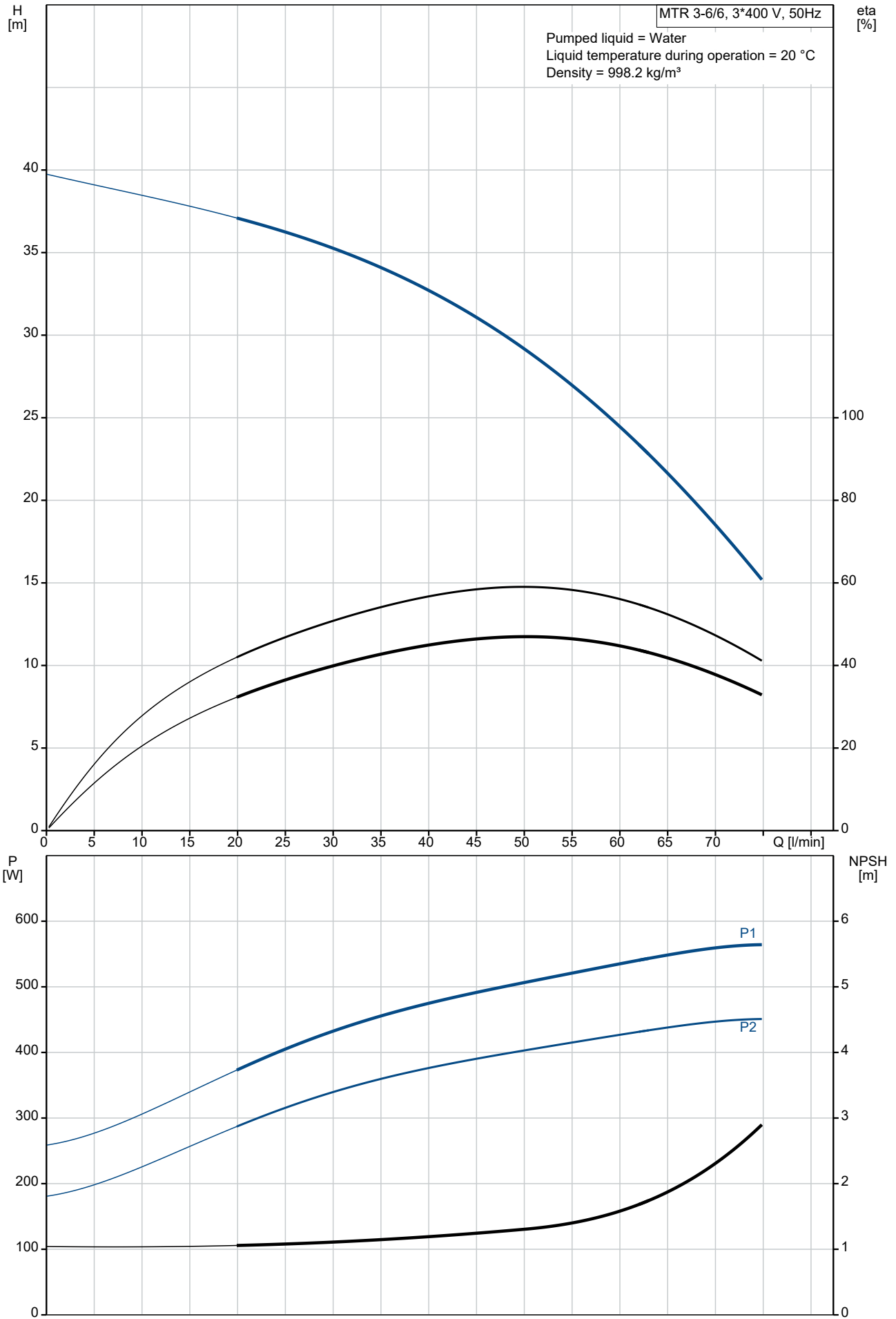


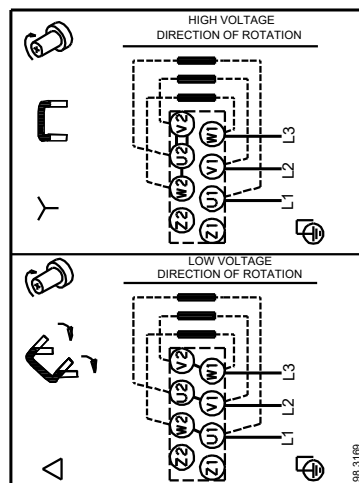
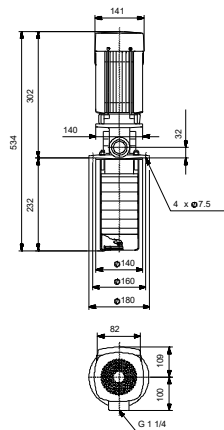
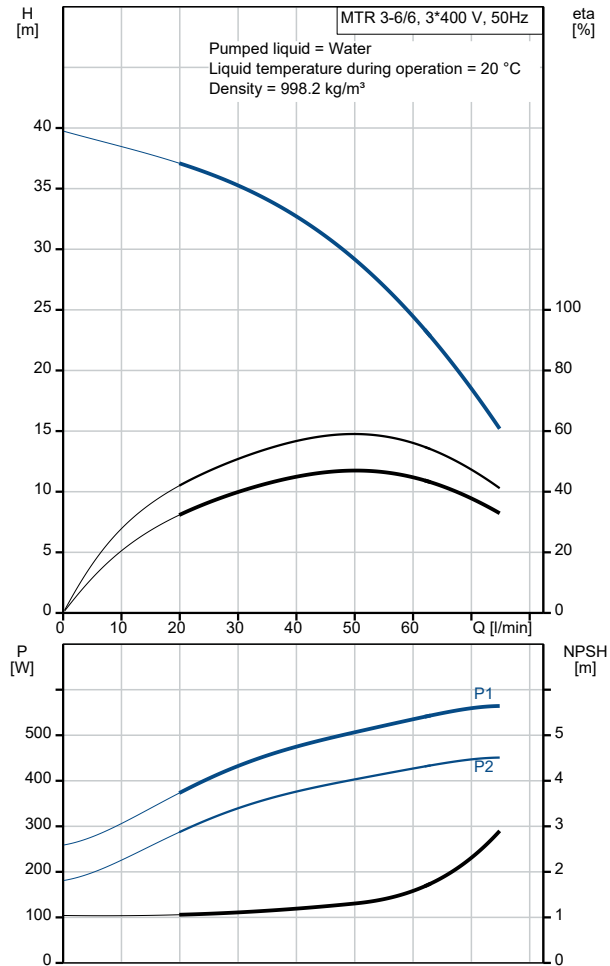
Qty.	Description
1	<p data-bbox="204 163 475 185">MTR 3-6/6 A-W-A-HUUV</p>  <p data-bbox="204 483 480 506">Product No.: On request</p> <p data-bbox="204 544 1430 618">Multistage, immersible, self-priming, centrifugal pump for vertical installation in tanks etc. The pump head and base are in cast iron – all other wetted parts are in stainless steel. The pump has the following characteristics:</p> <ul data-bbox="240 629 1118 741" style="list-style-type: none"> • Dimensions according to DIN 5440. • Impellers, intermediate chambers and spline shaft are made of Stainless steel. • Mechanical shaft seal according to EN 12756. • Power transmission via sintered metal split coupling. <p data-bbox="204 752 1430 797">A cartridge shaft seal ensures high reliability, safe handling, and easy access and service. The pump is fitted with a 3-phase, fan-cooled asynchronous motor.</p> <p data-bbox="204 835 300 857">Controls:</p> <p data-bbox="204 869 635 891">Frequency converter: NONE</p> <p data-bbox="204 927 276 949">Liquid:</p> <p data-bbox="204 960 635 983">Pumped liquid: Water</p> <p data-bbox="204 994 691 1016">Liquid temperature range: -10 .. 90 °C</p> <p data-bbox="204 1028 635 1050">Selected liquid temperature: 20 °C</p> <p data-bbox="204 1061 691 1084">Density: 998.2 kg/m³</p> <p data-bbox="204 1117 316 1140">Technical:</p> <p data-bbox="204 1151 818 1173">Pump speed on which pump data are based: 2856 rpm</p> <p data-bbox="204 1184 651 1207">Rated flow: 50 l/min</p> <p data-bbox="204 1218 643 1240">Rated head: 28.5 m</p> <p data-bbox="204 1252 579 1274">Chambers: 6</p> <p data-bbox="204 1285 579 1308">Drainage back to tank: N</p> <p data-bbox="204 1319 651 1341">Pump orientation: Vertical</p> <p data-bbox="204 1352 635 1375">Code for shaft seal: HUUV</p> <p data-bbox="204 1386 659 1408">Approvals: CE,EAC</p> <p data-bbox="204 1420 754 1442">Curve tolerance: ISO9906:2012 3B</p> <p data-bbox="204 1476 308 1498">Materials:</p> <p data-bbox="204 1509 802 1644">Pump head: Cast iron EN 1561 EN-GJL-200 ASTM A48-25B</p> <p data-bbox="204 1655 722 1789">Impeller: Stainless steel EN 1.4301 AISI 304</p> <p data-bbox="204 1823 746 1912">Installation:</p> <p data-bbox="204 1924 627 1946">t max amb: 60 °C</p> <p data-bbox="204 1957 643 1980">Maximum operating pressure: 25 bar</p> <p data-bbox="204 1991 722 2013">Max pressure at stated temp: 25 bar / 90 °C</p> <p data-bbox="204 2024 746 2047">Type of connection: G internal thread</p> <p data-bbox="204 2058 675 2080">Size of outlet connection: 1 1/4 inch</p> <p data-bbox="204 2092 659 2114">Immersion depth: 232 mm</p> <p data-bbox="204 2125 627 2148">Flange size for motor: FT85</p> <p data-bbox="204 2181 363 2204">Electrical data:</p> <p data-bbox="204 2215 611 2237">Motor standard: IEC</p> <p data-bbox="204 2226 611 2240">Motor type: 71B</p> <p data-bbox="204 2260 611 2240">IE Efficiency class: IE3</p> <p data-bbox="204 2293 659 2240">Rated power - P2: 0.55 kW</p>

Qty.	Description																																																
1	<table> <tr> <td>Mains frequency:</td> <td>50 Hz</td> </tr> <tr> <td>Suitable for 50/60 Hz:</td> <td>N</td> </tr> <tr> <td>Rated voltage:</td> <td>3 x 220-240D/380-415Y V</td> </tr> <tr> <td>Rated current:</td> <td>2.50/1.44 A</td> </tr> <tr> <td>Starting current:</td> <td>580-620 %</td> </tr> <tr> <td>Cos phi - power factor:</td> <td>0.80-0.70</td> </tr> <tr> <td>Rated speed:</td> <td>2830-2850 rpm</td> </tr> <tr> <td>Efficiency:</td> <td>IE3 77,8%</td> </tr> <tr> <td>Motor efficiency at full load:</td> <td>77.8 %</td> </tr> <tr> <td>Motor efficiency at 3/4 load:</td> <td>81.5 %</td> </tr> <tr> <td>Motor efficiency at 1/2 load:</td> <td>79.5 %</td> </tr> <tr> <td>Number of poles:</td> <td>2</td> </tr> <tr> <td>Enclosure class (IEC 34-5):</td> <td>55 Dust/Jetting</td> </tr> <tr> <td>Insulation class (IEC 85):</td> <td>F</td> </tr> <tr> <td>Motor No:</td> <td>85805103</td> </tr> <tr> <td colspan="2">Others:</td> </tr> <tr> <td>Terminal box position:</td> <td>6</td> </tr> <tr> <td>Minimum efficiency index, MEI \geq:</td> <td>0.70</td> </tr> <tr> <td>Net weight:</td> <td>12.5 kg</td> </tr> <tr> <td>Gross weight:</td> <td>15.7 kg</td> </tr> <tr> <td>Shipping volume:</td> <td>0.052 m³</td> </tr> <tr> <td>Danish VVS No.:</td> <td>386963006</td> </tr> <tr> <td>Country of origin:</td> <td>HU</td> </tr> <tr> <td>Custom tariff no.:</td> <td>84137075</td> </tr> </table>	Mains frequency:	50 Hz	Suitable for 50/60 Hz:	N	Rated voltage:	3 x 220-240D/380-415Y V	Rated current:	2.50/1.44 A	Starting current:	580-620 %	Cos phi - power factor:	0.80-0.70	Rated speed:	2830-2850 rpm	Efficiency:	IE3 77,8%	Motor efficiency at full load:	77.8 %	Motor efficiency at 3/4 load:	81.5 %	Motor efficiency at 1/2 load:	79.5 %	Number of poles:	2	Enclosure class (IEC 34-5):	55 Dust/Jetting	Insulation class (IEC 85):	F	Motor No:	85805103	Others:		Terminal box position:	6	Minimum efficiency index, MEI \geq :	0.70	Net weight:	12.5 kg	Gross weight:	15.7 kg	Shipping volume:	0.052 m ³	Danish VVS No.:	386963006	Country of origin:	HU	Custom tariff no.:	84137075
Mains frequency:	50 Hz																																																
Suitable for 50/60 Hz:	N																																																
Rated voltage:	3 x 220-240D/380-415Y V																																																
Rated current:	2.50/1.44 A																																																
Starting current:	580-620 %																																																
Cos phi - power factor:	0.80-0.70																																																
Rated speed:	2830-2850 rpm																																																
Efficiency:	IE3 77,8%																																																
Motor efficiency at full load:	77.8 %																																																
Motor efficiency at 3/4 load:	81.5 %																																																
Motor efficiency at 1/2 load:	79.5 %																																																
Number of poles:	2																																																
Enclosure class (IEC 34-5):	55 Dust/Jetting																																																
Insulation class (IEC 85):	F																																																
Motor No:	85805103																																																
Others:																																																	
Terminal box position:	6																																																
Minimum efficiency index, MEI \geq :	0.70																																																
Net weight:	12.5 kg																																																
Gross weight:	15.7 kg																																																
Shipping volume:	0.052 m ³																																																
Danish VVS No.:	386963006																																																
Country of origin:	HU																																																
Custom tariff no.:	84137075																																																

On request MTR 3-6/6 A-W-A-HUUUV 50 Hz

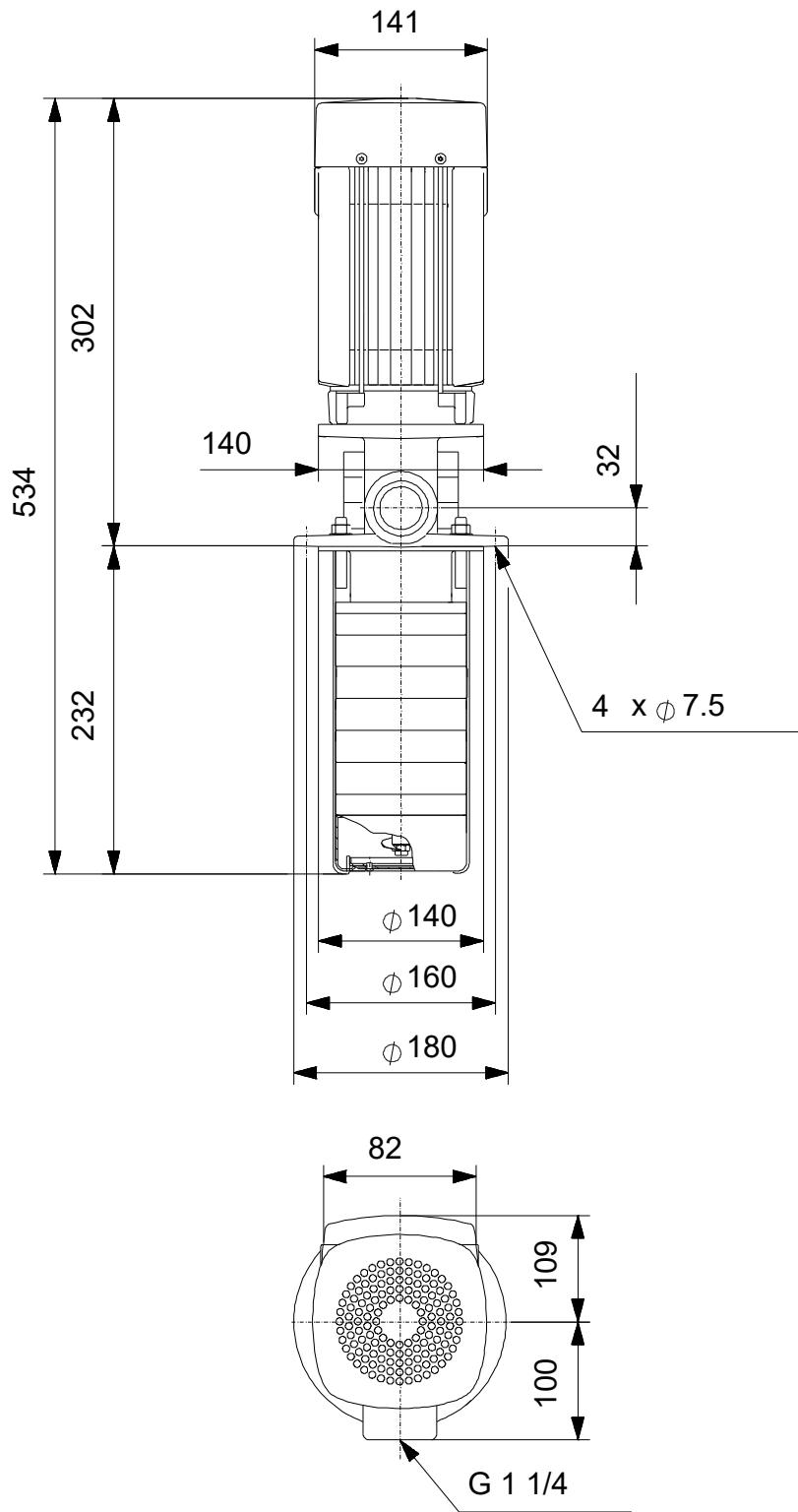


Description	Value
General information:	
Product name:	MTR 3-6/6 A-W-A-HUUV
Product No:	On request
EAN number:	On request
Technical:	
Pump speed on which pump data are based:	2856 rpm
Rated flow:	50 l/min
Rated head:	28.5 m
Chambers:	6
Impellers:	6
Number of reduced-diameter impellers:	0
Drainage back to tank:	N
Pump orientation:	Vertical
Code for shaft seal:	HUUV
Approvals:	CE, EAC
Curve tolerance:	ISO9906:2012 3B
Pump version:	A
Model:	A
Materials:	
Pump head:	Cast iron
Pump head:	EN 1561 EN-GJL-200
Pump head:	ASTM A48-25B
Impeller:	Stainless steel
Impeller:	EN 1.4301
Impeller:	AISI 304
Material code:	A
Installation:	
t max amb:	60 °C
Maximum operating pressure:	25 bar
Max pressure at stated temp:	25 bar / 90 °C
Type of connection:	G internal thread
Size of outlet connection:	1 1/4 inch
Immersion depth:	232 mm
Flange size for motor:	FT85
Connect code:	W
Liquid:	
Pumped liquid:	Water
Liquid temperature range:	-10 .. 90 °C
Selected liquid temperature:	20 °C
Density:	998.2 kg/m ³
Electrical data:	
Motor standard:	IEC
Motor type:	71B
IE Efficiency class:	IE3
Rated power - P2:	0.55 kW
Mains frequency:	50 Hz
Suitable for 50/60 Hz:	N
Rated voltage:	3 x 220-240D/380-415Y V
Rated current:	2.50/1.44 A
Starting current:	580-620 %
Cos phi - power factor:	0.80-0.70
Rated speed:	2830-2850 rpm
Efficiency:	IE3 77,8%
Motor efficiency at full load:	77.8 %
Motor efficiency at 3/4 load:	81.5 %
Motor efficiency at 1/2 load:	79.5 %
Number of poles:	2
Enclosure class (IEC 34-5):	55 Dust/Jetting
Insulation class (IEC 85):	F
Built-in motor protection:	NONE
Motor No:	85805103
Controls:	



Description	Value
Frequency converter:	NONE
Others:	
Terminal box position:	6
Minimum efficiency index, MEI ≥:	0.70
Net weight:	12.5 kg
Gross weight:	15.7 kg
Shipping volume:	0.052 m ³
Danish VVS No.:	386963006
Country of origin:	HU
Custom tariff no.:	84137075

On request MTR 3-6/6 A-W-A-HUUV 50 Hz



Note! All units are in [mm] unless others are stated.
Disclaimer: This simplified dimensional drawing does not show all details.

On request MTR 3-6/6 A-W-A-HUUV 50 Hz



98.3169

Note! All units are in [mm] unless others are stated.

