

**Qty. Description**

1 CRT 2-11 A-P-A-E-AUUE



Note! Product picture may differ from actual product

Product No.: [96100308](#)

Vertical, non-self-priming, multistage, in-line, centrifugal pump for installation in pipe systems and mounting on a foundation.

The pump has the following characteristics:

- Impellers, intermediate chambers and outer sleeve are made of Titanium.
- Pump head cover and base are made of Titanium.
- The shaft seal has assembly length according to EN 12756.
- Power transmission is via cast iron split coupling.
- Pipework connection is via PJE flanges/couplings.

The motor is a 3-phase AC motor.

Liquid:

Pumped liquid: Water  
Minimum liquid temperature: -20 °C  
Maximum liquid temperature: 120 °C  
Selected liquid temperature: 20 °C  
Density: 998.2 kg/m<sup>3</sup>

Technical:

Pump speed on which pump data are based: 2900 rpm  
Rated flow: 2.5 m<sup>3</sup>/h  
Rated head: 62.7 m  
Code for shaft seal: AUUE  
Approvals: CE,EAC,UKCA,SEPRO  
Curve tolerance: ISO9906:2012 3B

Materials:

Pump housing: Titanium  
Impeller: Titanium  
ASTM B 265  
Bearing: SIC

Installation:

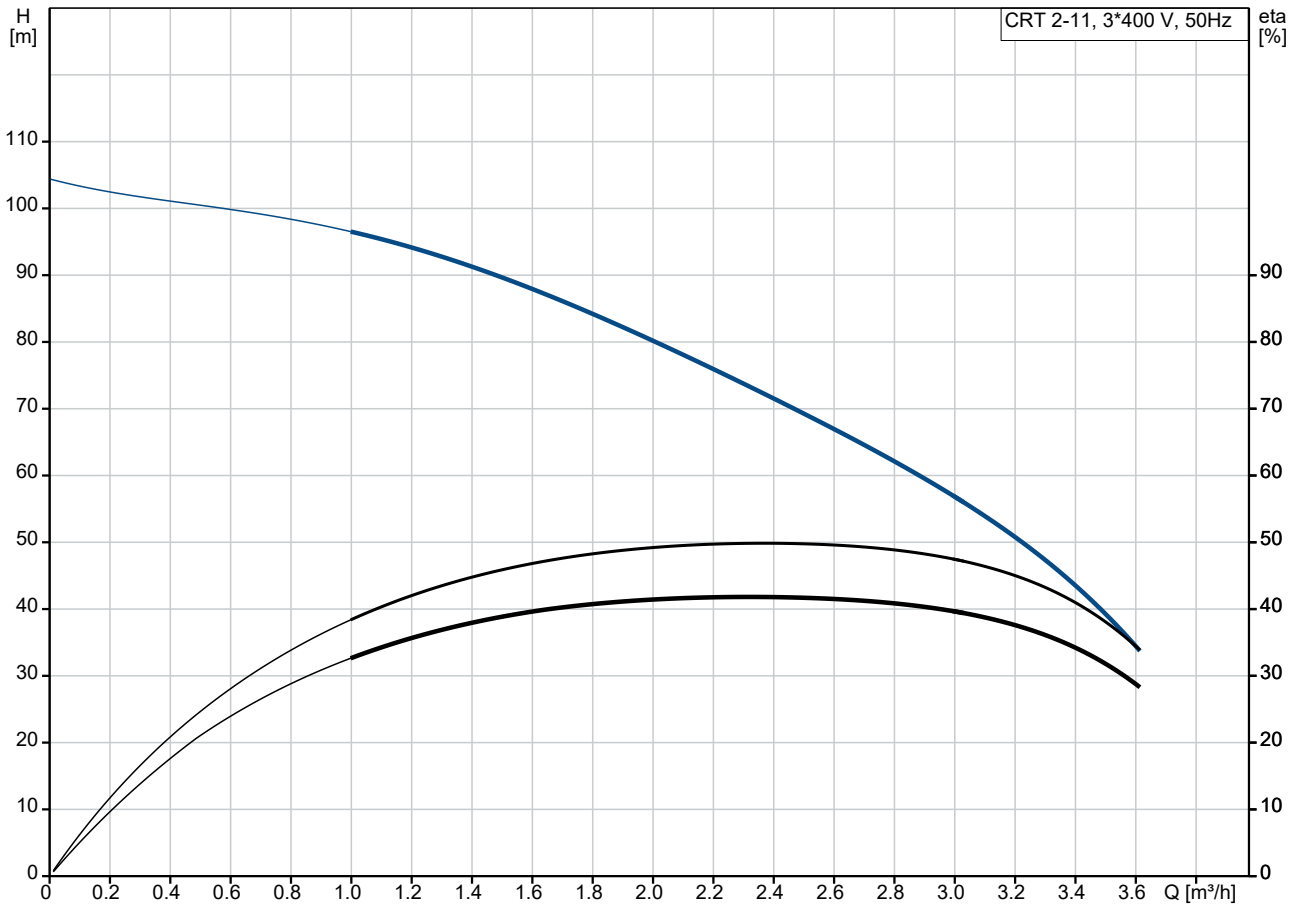
Max. ambient temperature: 60 °C  
Maximum operating pressure: 25 bar  
Max pressure at stated temp: 25 bar / 120 °C  
25 bar / -20 °C

Type of connection: PJE  
Pipe connection: 42,4 mm

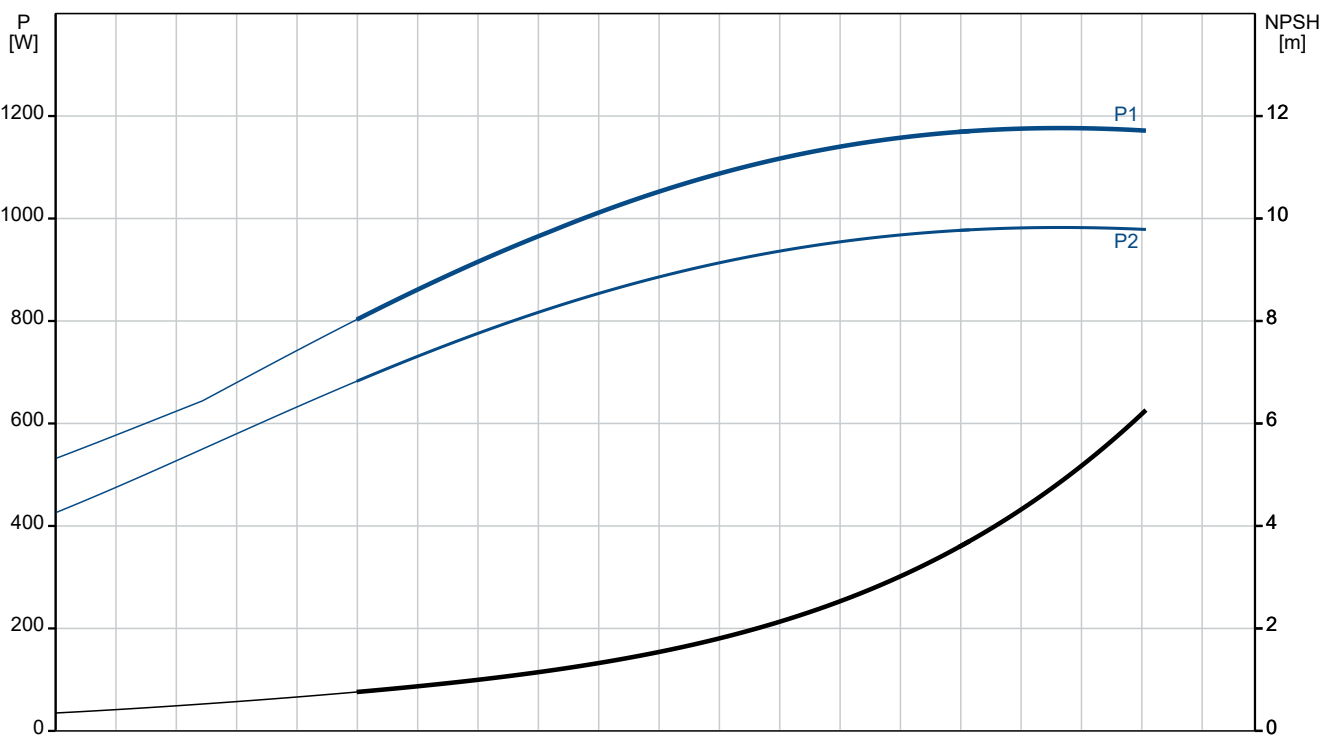
**Qty. Description**

1	<p>Flange size for motor: FT100</p> <p>Electrical data:</p> <p>Motor standard: IEC</p> <p>Motor type: 80C</p> <p>IE Efficiency class: IE3</p> <p>Rated power - P2: 1.1 kW</p> <p>Power (P2) required by pump: 1.1 kW</p> <p style="padding-left: 20px;">1.1 kW</p> <p>Mains frequency: 50 Hz</p> <p>Rated voltage: 3 x 220-240D/380-415Y V</p> <p>Rated current: 4.35/2.50 A</p> <p>Starting current: 450-500 %</p> <p>Cos phi - power factor: 0.83-0.76</p> <p>Rated speed: 2840-2870 rpm</p> <p>Efficiency: IE3 82,7%</p> <p>Motor efficiency at full load: 82.7 %</p> <p>Motor efficiency at 3/4 load: 84.6 %</p> <p>Motor efficiency at 1/2 load: 85.4 %</p> <p>Number of poles: 2</p> <p>Enclosure class (IEC 34-5): 55 Dust/Jetting</p> <p>Insulation class (IEC 85): F</p> <p>Motor No: 85U05105</p> <p>Others:</p> <p>Minimum efficiency index, MEI ≥: 0.7</p> <p>Net weight: 20.5 kg</p> <p>Gross weight: 25.5 kg</p> <p>Shipping volume: 0.054 m<sup>3</sup></p> <p>Danish VVS No.: 386051311</p>
---	---

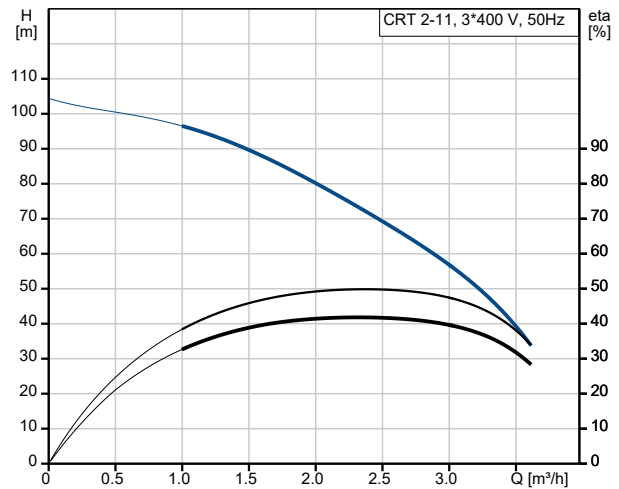
## 96100308 CRT 2-11 A-P-A-E-AUUE 50 Hz



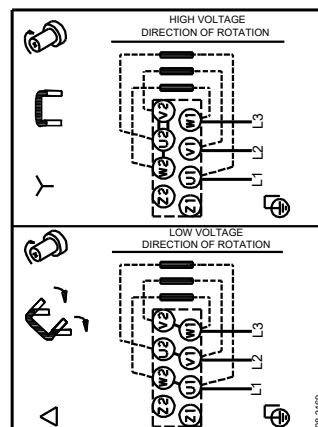
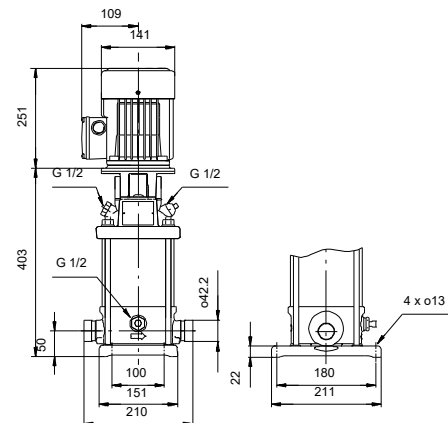
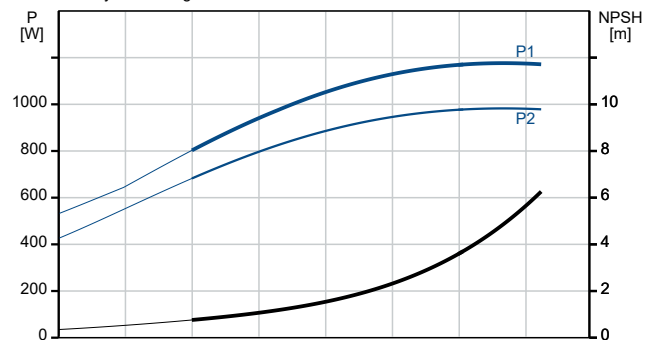
Pumped liquid = Water  
Liquid temperature during operation = 20 °C  
Density = 998.2 kg/m³



Description	Value
<b>General information:</b>	
Product name:	CRT 2-11 A-P-A-E-AUUE
Product No:	96100308
EAN number:	5700395842661
<b>Technical:</b>	
Pump speed on which pump data are based:	2900 rpm
Rated flow:	2.5 m <sup>3</sup> /h
Rated head:	62.7 m
Maximum head:	102 m
Stages:	11
Impellers:	11
Code for shaft seal:	AUUE
Approvals:	CE,EAC,UKCA,SEPRO
<b>Curve tolerance:</b> ISO9906:2012 3B	
Pump version:	A
Model:	A
<b>Materials:</b>	
Pump housing:	Titanium
Impeller:	Titanium
Impeller:	ASTM B 265
Material code:	A
Code for rubber:	E
Bearing:	SIC
<b>Installation:</b>	
Max. ambient temperature:	60 °C
Maximum operating pressure:	25 bar
Max pressure at stated temp:	25 bar / 120 °C
Max pressure at stated temp:	25 bar / -20 °C
Type of connection:	PJE
Pipe connection:	42,4 mm
Flange size for motor:	FT100
Connect code:	P
<b>Liquid:</b>	
Pumped liquid:	Water
Minimum liquid temperature:	-20 °C
Maximum liquid temperature:	120 °C
Selected liquid temperature:	20 °C
Density:	998.2 kg/m <sup>3</sup>
<b>Electrical data:</b>	
Motor standard:	IEC
Motor type:	80C
IE Efficiency class:	IE3
Rated power - P2:	1.1 kW
Power (P2) required by pump:	1.1 kW
Power (P2) required by pump:	1.1 kW
Mains frequency:	50 Hz
Rated voltage:	3 x 220-240D/380-415Y V
Rated current:	4.35/2.50 A
Starting current:	450-500 %
Cos phi - power factor:	0.83-0.76
Rated speed:	2840-2870 rpm
Efficiency:	IE3 82,7%
Motor efficiency at full load:	82.7 %
Motor efficiency at 3/4 load:	84.6 %
Motor efficiency at 1/2 load:	85.4 %



Pumped liquid = Water  
Liquid temperature during operation = 20 °C  
Density = 998.2 kg/m<sup>3</sup>





Company name:

Created by:

Phone:

Date:

22/12/2022

Description	Value
Number of poles:	2
Enclosure class (IEC 34-5):	55 Dust/Jetting
Insulation class (IEC 85):	F
Built-in motor protection:	NONE
Motor No:	85U05105
<b>Others:</b>	
Minimum efficiency index, MEI ≥:	0.7
Net weight:	20.5 kg
Gross weight:	25.5 kg
Shipping volume:	0.054 m <sup>3</sup>
Danish VVS No.:	386051311



Company name:

Created by:

Phone:

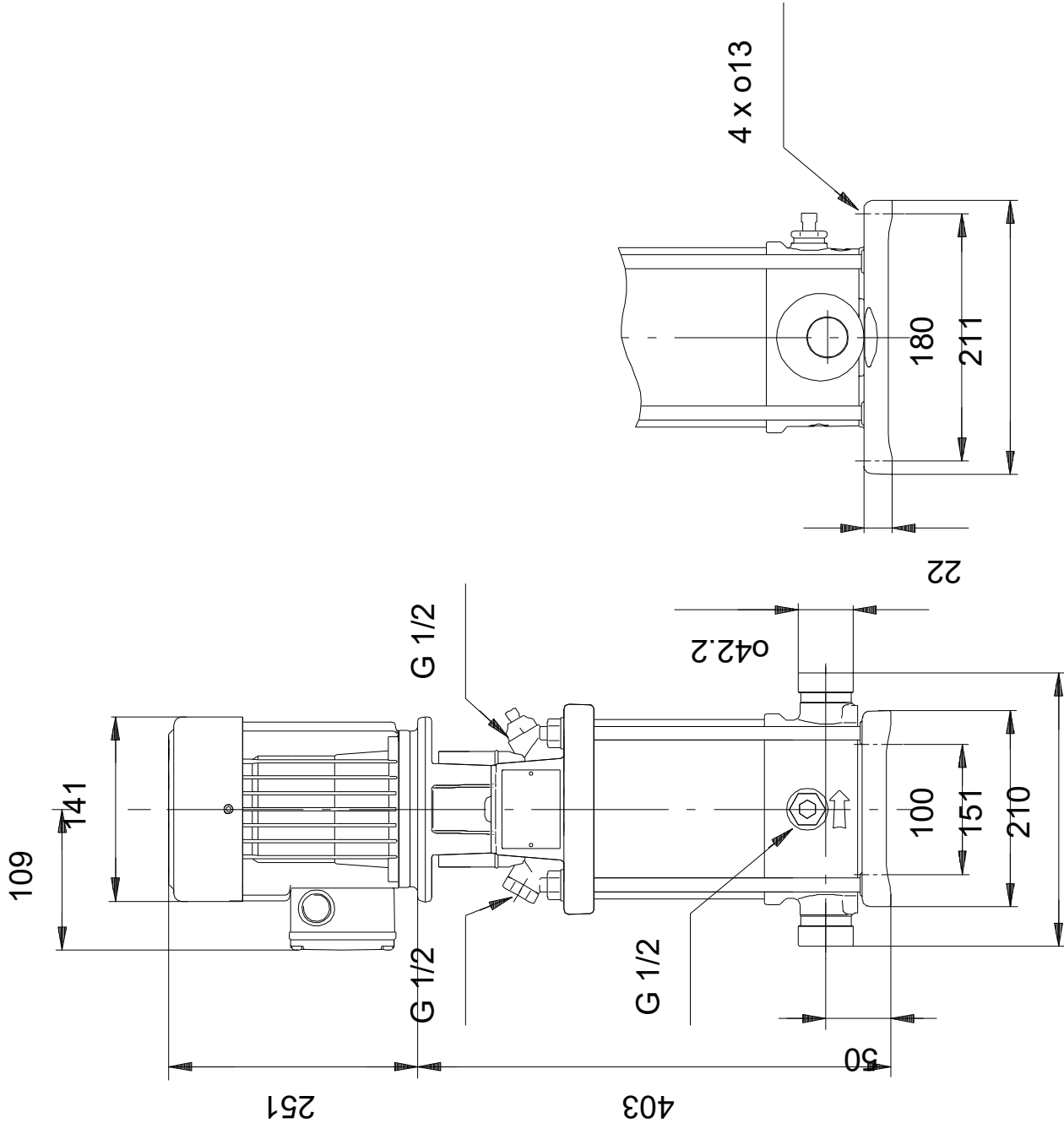
Date:

22/12/2022

---

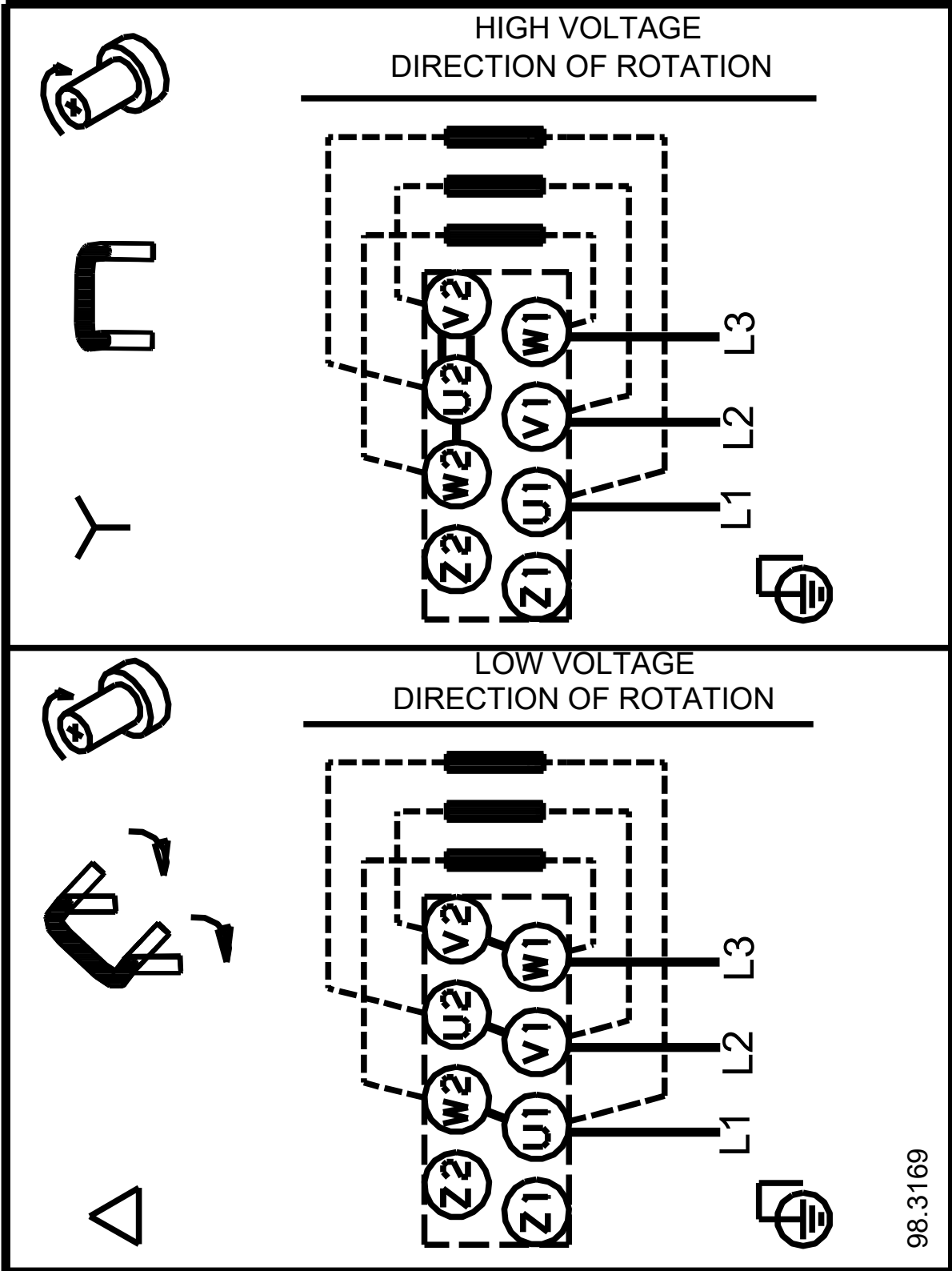
**96100308 CRT 2-11 A-P-A-E-AUUE 50 Hz**

## 96100308 CRT 2-11 A-P-A-E-AUUE 50 Hz



Note! All units are in [mm] unless others are stated.  
Disclaimer: This simplified dimensional drawing does not show all details.

**96100308 CRT 2-11 A-P-A-E-AUUE 50 Hz**



98.3169

Note! All units are in [mm] unless others are stated.



