

# JE 1-110 G10 MM20

Electric - Qmax 24 m<sup>3</sup>/h (110 USGPM) - Hmax 16,5 m (54 ft)



## Product data

<b>Suction port</b>	threaded - 1 1/2" BSP
<b>Delivery port</b>	threaded - 1 1/2" BSP
<b>Qmax</b>	24 m <sup>3</sup> /h (110 USGPM)
<b>Hmax</b>	16,5 m (54 ft)
<b>Solids handling</b>	20 mm (0.8")
<b>Engine power</b>	1,1 kW - 1,5 HP
<b>Weight</b>	25 kg (60 lb)

Indicative picture of the product

## J

### Self-priming centrifugal pumps

The J series self-priming centrifugal pumps are for applications where the main feature is the difficulty in priming: even with suction heights of several meters the machine quickly evacuates the air from the suction pipe and starts pumping. Furthermore, compared to other pumps, the semi-open impeller makes the J suitable for pumping liquids with solids in suspension.

### Applications

Varisco S.p.A. has a long-standing experience in designing and producing self-priming pumps and now has a wide range of solutions and materials. The J have features that not only meet the needs of the market but make it an extremely versatile product suitable for professionals of Constructions, Industry and Emergency duty.

- Drainage of excavations, canals and ponds
- Ground water dewatering with wellpoint systems
- Sewage by-pass
- Naval platforms ballasting
- Drainage after flooding or terrential rains

## Benefits

### Rapid self-priming

without foot valve up to a height of 7.5 m (24.5 ft)

### High resistance

to abrasive liquids and turbid sandy waters

### Semi-open impeller

solids handling up to 20 mm (0.8")

### Wear plate

Easily replaceable cast iron wear plate, front to the impeller

### Easy maintenance

removable front cover for direct access to the impeller and eventual unclogging

# JE 1-110 G10 MM20



## Performance curves

Test according to UNI EN ISO 9906 standard - level 2

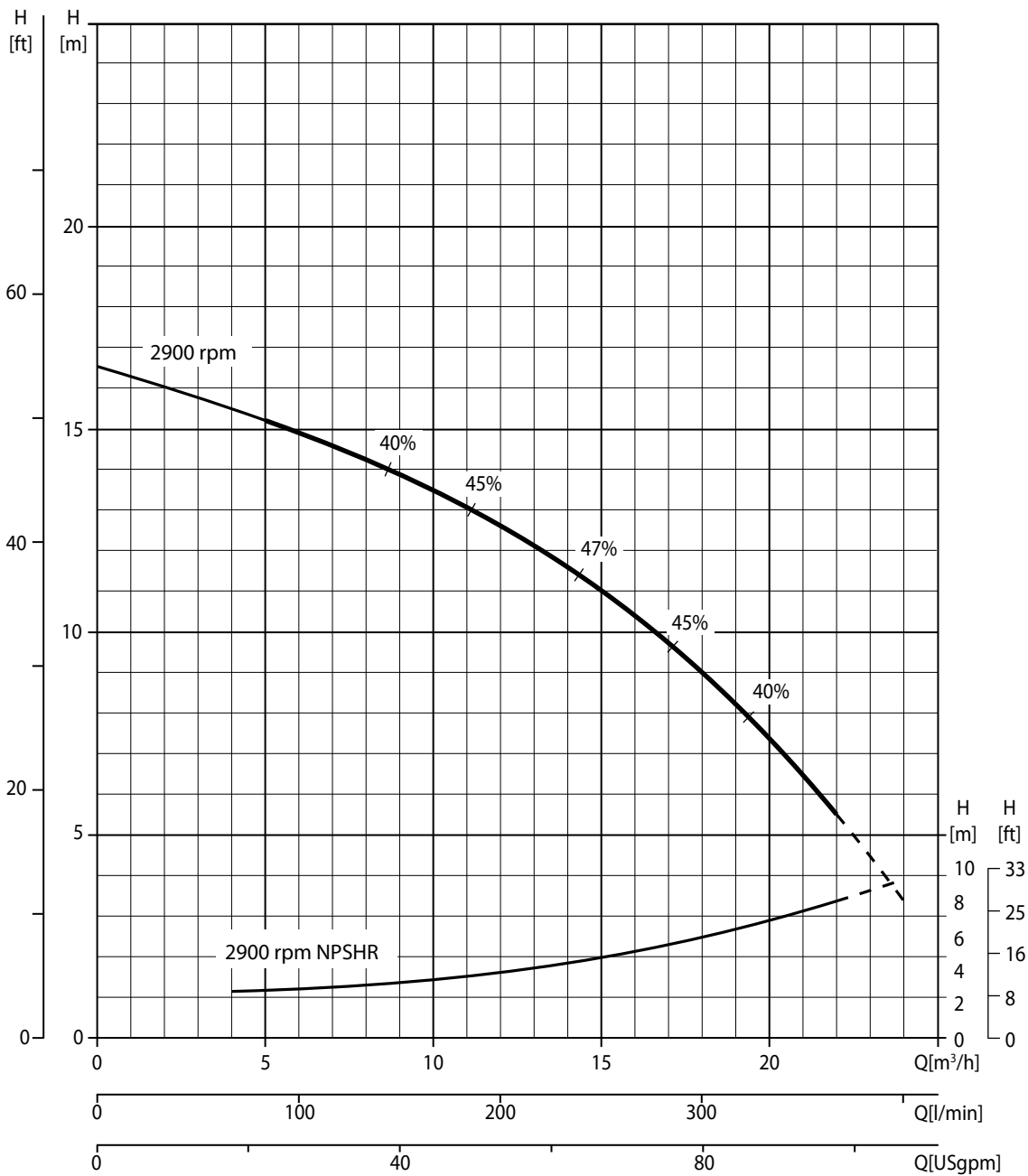
Test liquid: clean water, density 1,000 kg/m<sup>3</sup>

Spherical solids handling: D.20 mm (0.8")

Priming time: 26 s from 1,5 m (4.9 ft)

Max absorbed power: 1,1 kW - 1.5 HP (2.900 rpm)

■ Recommended operating range



# JE 1-110 G10 MM20



## Technical data

### Pump

Pump model	J 1-110 G10
Qmax	24 m <sup>3</sup> /h - 400 l/min (100 USGPM)
Hmax	16,5 m (54 ft)
Suction port	threaded - 1 1/2" BSP
Delivery port	threaded - 1 1/2" BSP
Impeller type	semi-open, 3 vane
Solids handling	20 mm (0.8 ")
Casing	EN-GJL-200 cast iron
Impeller	EN-GJL-200 cast iron
Wear plate	EN-GJL-250 cast iron
Non-return valve	check-valve, NBR
Shaft	C45 steel
Mechanical seal	Silicon carbide
Elastomers	NBR
Lubrication	grease



### Engine

Supply	electric
Type	three-phase TEFC
No. poles	2
Tension supply	230 V
Frequency	50 Hz
Rated power	1,1 kW - 1,5 HP
Rated speed	2.750 rpm
Class efficiency	IE2 - IEC 60034-30
Max efficiency	64,0 %
Protection rating	IP55
Insulation class	F
Rpm type	fixed
Service type	continuous - S1

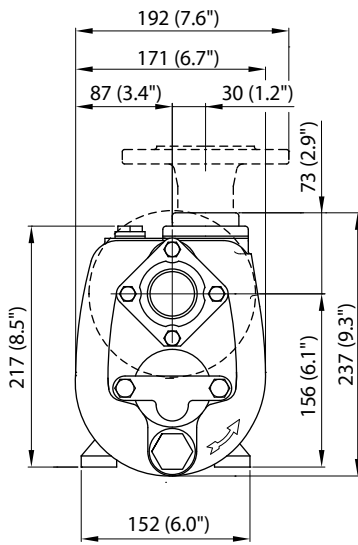
# JE 1-110 G10 MM20



## Arrangement

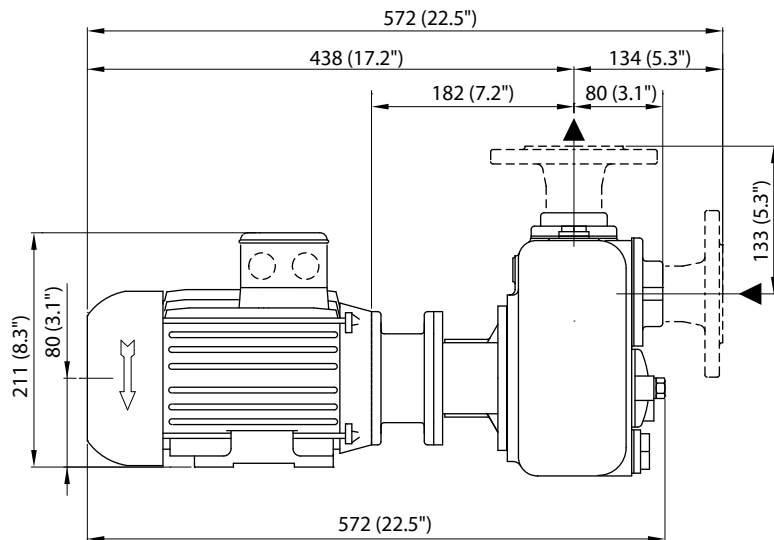
Model	close-coupling E
Dimensions	171 x 520 x 237 mm (7 x 20 x 9 ")
Material	cast iron
Coatings	bicomponent, average thickness of 80 µm
Color	RAL 5010 blue (standard)
Features	close-coupling with rigid coupling
Height connection	0,2 m (0.5 ft)

## Dimensions



## Weight

Dry weight 25 kg (60 lb)



## EN ISO 9001:2008 REG. NO 44 100 091767



Varisco S.p.A. has certified its Quality Management System in accordance with the requirements of the ISO 9001:2008 international standards. The quality of the product comes from the quality of the processes: standardise activities, enhance human resources, pursue a logic of continuous improvement aiming for the constant satisfaction of its Customers.

**Varisco S.p.A.** Terza strada, 9 - Z.I. Nord 35129 PADOVA - Italy  
tel +39 049 8294 111 fax +39 049 80 76 762  
export@variscopspa.com