



## Data sheet

### Hydraulic data

Maximum operating pressure $P_N$	10 bar
Delivery head for $Q_{min}$ $H_{Q_{min}}$	1.0 m
Max. volume flow $Q_{max}$	0.4 m <sup>3</sup> /h
Min. fluid temperature $T_{min}$	2 °C
Max. fluid temperature $T_{max}$	95 °C
Min. ambient temperature $T_{min}$	2 °C
Max. ambient temperature $T_{max}$	40 °C
Max. permitted total water hardness	3.57 mmol/l (20°dH)

### Motor data

Mains connection	1~230 V, 50 Hz
Rated power $P_2$	5 W
Rated current $I_N$	0.05 A
Max. speed $n_{max}$	3000 1/min
Power consumption $P_{1 min}$	3 W
Power consumption $P_{1 max}$	5 W
Interference emission	EN 61000-6-3
Interference immunity	EN 61000-6-2
Protection class motor	IP42
Insulation class	F
Threaded cable connection	1 x PG11
Motor protection	no

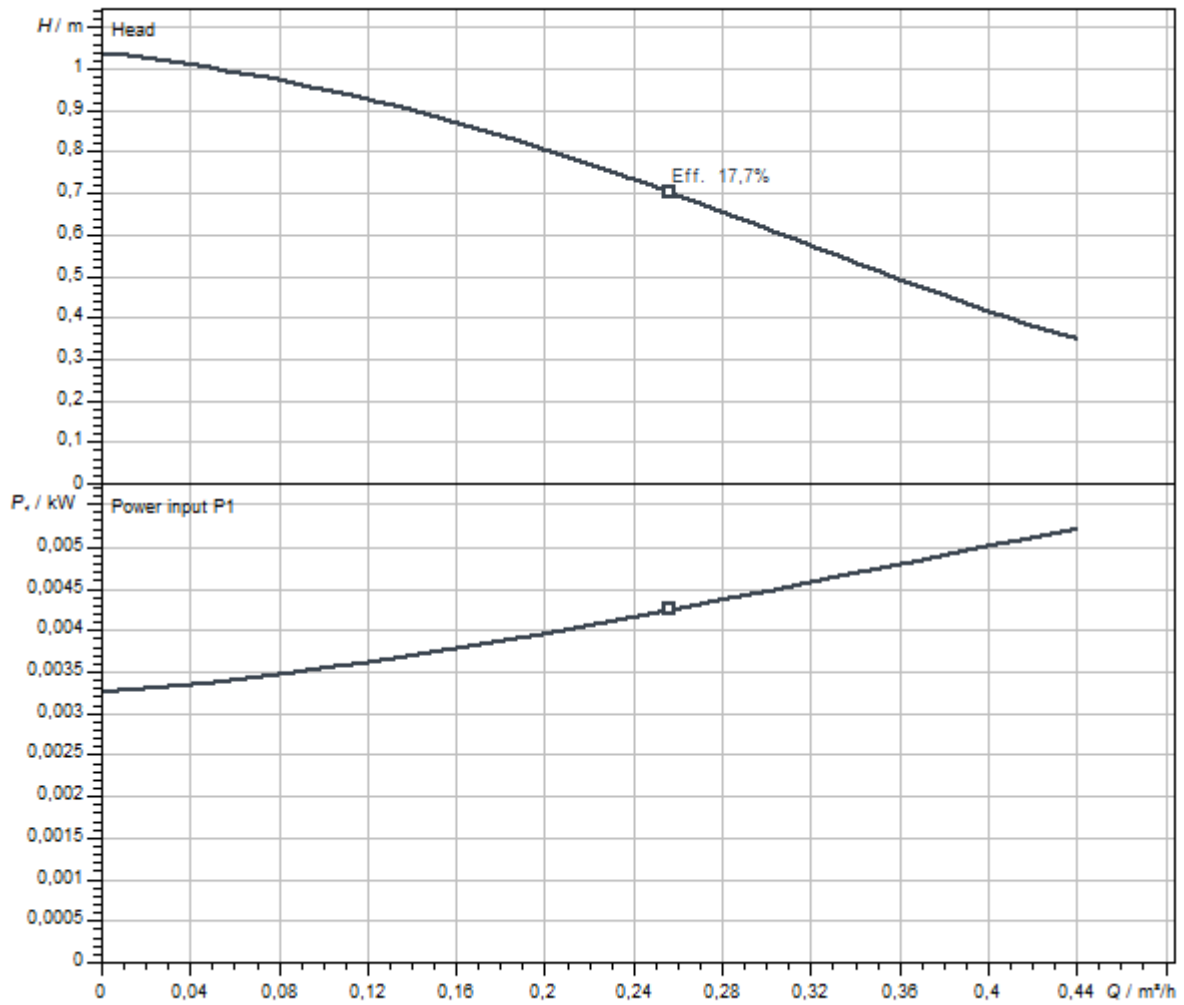
### Materials

Pump housing	Brass
Impeller	PPE/PS-GF30
Shaft	Ceramic
Bearing	Carbon, synthetic resin-impregnated

### Installation dimensions

Thread	G 1
Pipe connection on the suction side $DN_s$	Rp ½
Pipe connection on the discharge side $DN_d$	Rp ½
Port-to-port length $L_0$	84 mm

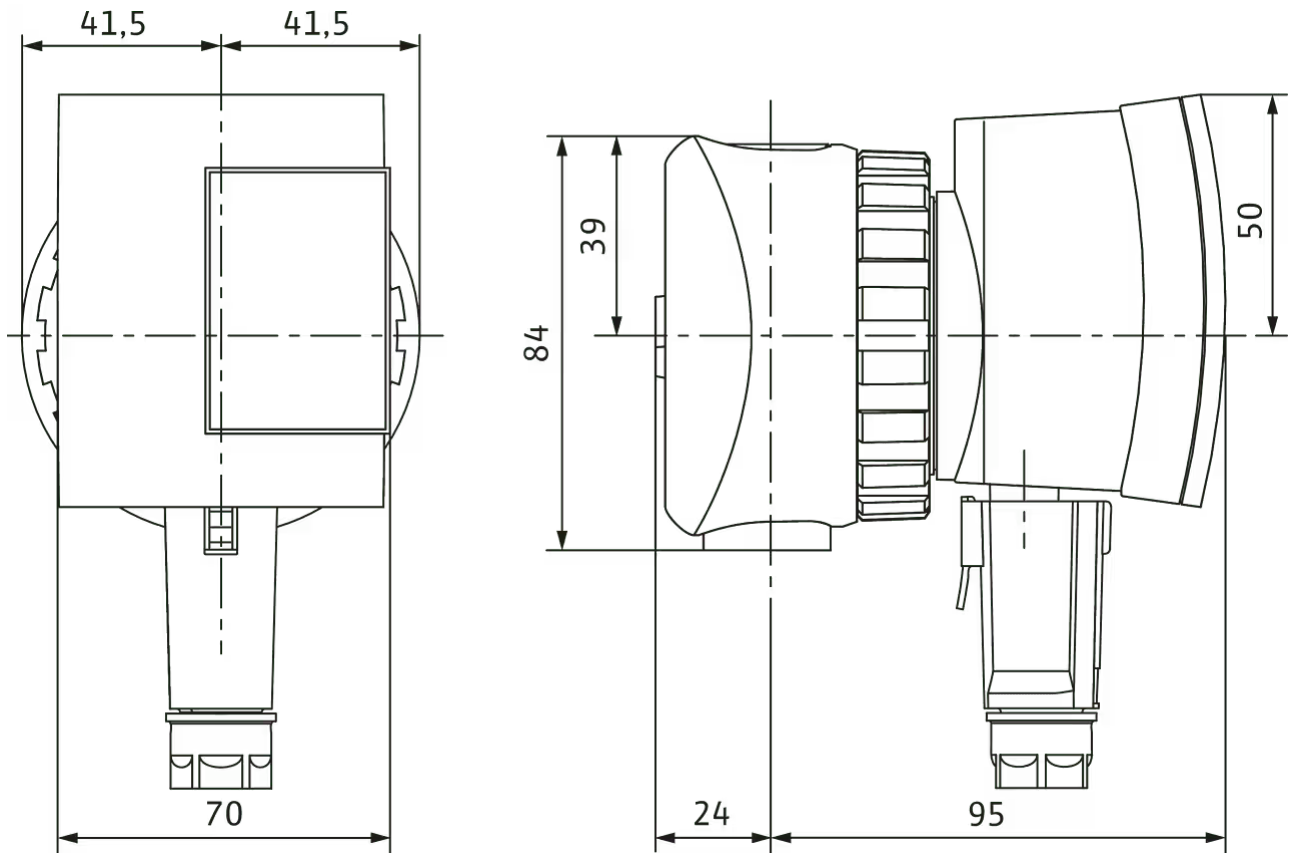
Pump curves



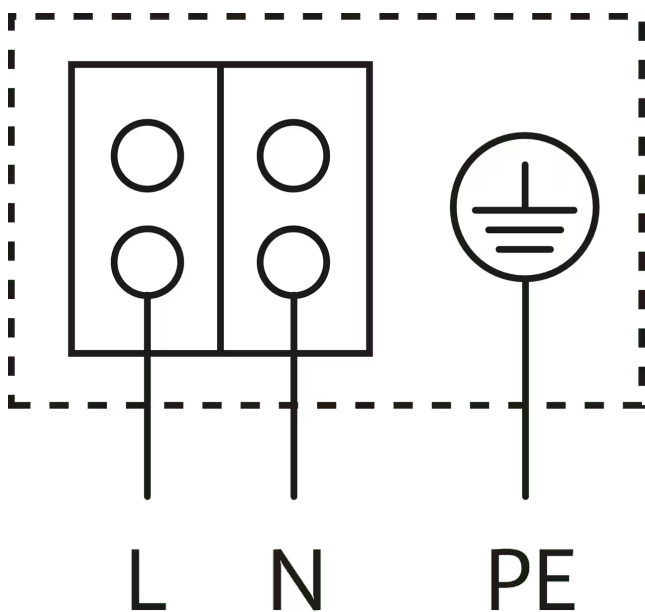
Fluid media	Water 100 %
Fluid temperature <i>T</i>	20,00 °C
speed at duty point <i>n hydr. @ OP</i>	2.900 1/min

Dimensions and dimensions drawings

Star Z-NOVA



## Wiring diagram



Blocking current-proof motor

Single-phase motor (EM) 2-pole - 1~230 V, 50 Hz

## Ordering information

## Product data

Brand	Wilo
Product description	Star-Z NOVA
Article number	<a href="#">4132760</a>
EAN number	4048482094151
Colour	Green
Minimum order quantity	1
Date of sales availability	2010-03-01

## Dimension, weight

Length with packaging	134 mm
Length <i>L</i>	119 mm
Height with packaging	117 mm
Height <i>H</i>	83 mm
Width with packaging	158 mm
Width <i>W</i>	84 mm
Gross weight, approx. <i>m</i>	0.9 kg
Net weight, approx. <i>m</i>	0.8 kg

## Packaging

Number per layer	40
Packaging property	Sales packaging
Packaging type	Cardboard box
Pieces per pallet	320

## Tender text

This circulator is suitable only for drinking water.  
 Wilo-Star-Z NOVA domestic hot water circulator (glandless pump version) for single-family houses.  
 Pump for pipe installation, blocking-current proof synchronous motor with high starting torque.

Brass pump housing, Noryl impeller, ceramic shaft.  
 Power consumption of 3 – 5 W.  
 Equipped with thermal insulation shell as standard, housing thread Rp ½.

## Operating Data

Max. fluid temperature $T_{\max}$	95 °C
Min. fluid temperature $T_{\min}$	2 °C
Min. ambient temperature $T_{\min}$	2 °C
Max. ambient temperature $T_{\max}$	40 °C
Temperature range at max. ambient temperature +40 °C $T$	+2...+65
Maximum operating pressure $P_N$	10 bar
Max. permitted total water hardness	3.57 mmol/l (20°dH)

## Motor data

Interference emission	EN 61000-6-3
Interference immunity	EN 61000-6-2
Mains connection	1~230 V, 50 Hz
Power consumption $P_{1\max}$	5 W
Max. speed $n_{\max}$	3000 1/min
Rated current $I_N$	0.05 A
Protection class motor	IP42
Threaded cable connection	1 x PG11

## Materials

Pump housing	Brass
Impeller	PPE/PS-GF30
Shaft	Ceramic
Bearing	Carbon, synthetic resin-impregnated

## Installation dimensions

Pipe connection on the suction side $DN_s$	Rp ½
Pipe connection on the discharge side $DN_d$	Rp ½
Port-to-port length $L_0$	84 mm

## Ordering information

Brand	Wilo
Product description	Star-Z NOVA
Net weight, approx. $m$	0.8 kg
Article number	<b>4132760</b> 